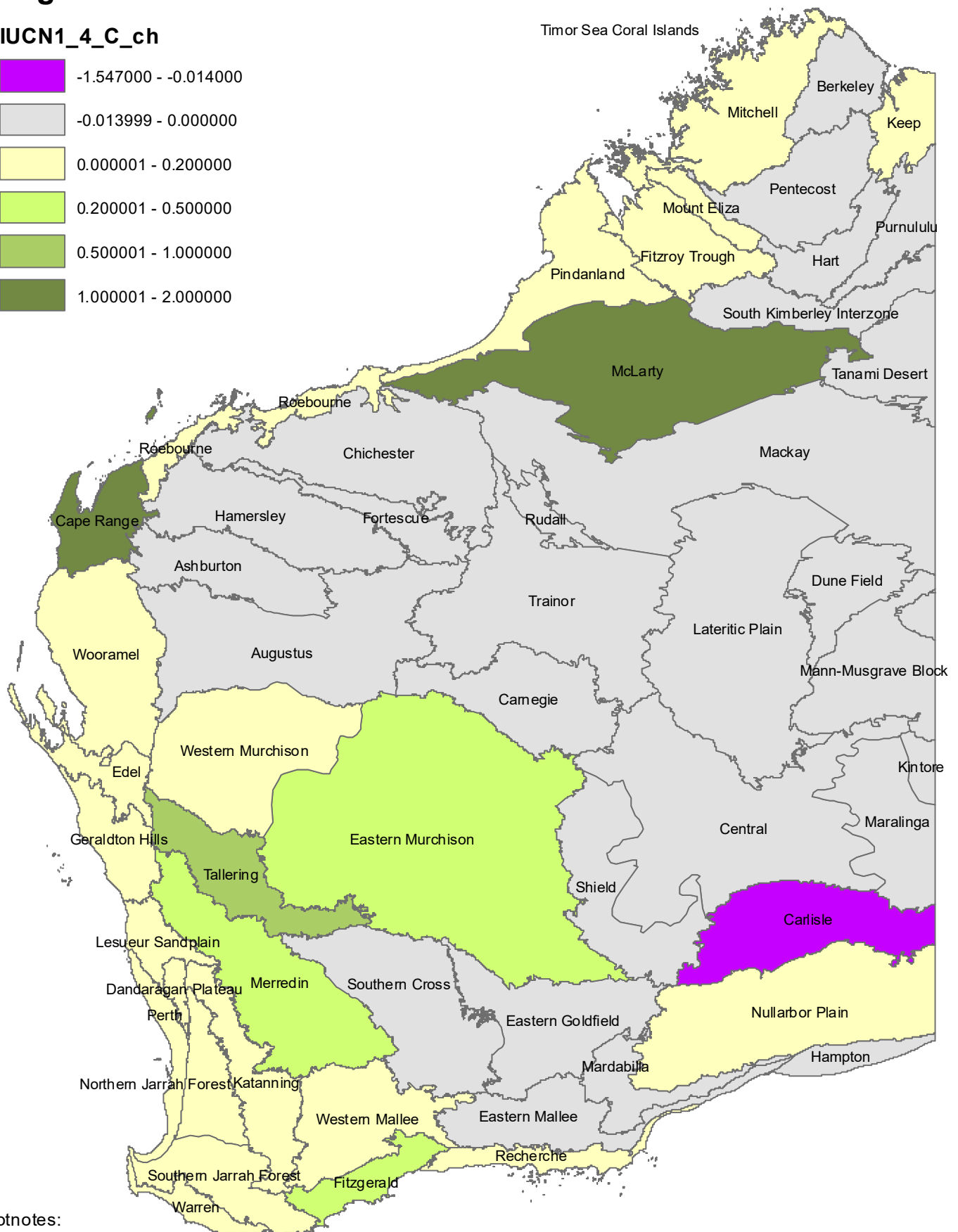
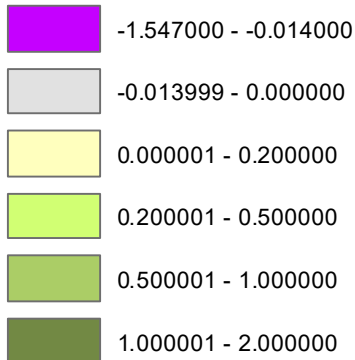


# Change in the proportion of the IBRA sub-region in the Conservation Estate (IUCN I-IV) from 2016 to 2021

## Legend

IUCN1\_4\_C\_ch



### Footnotes:

(1) The Conservation Estate is comprised of:

- DBCA-Managed land with tenure categories of: National Park and IUCN I-IV areas that are Nature Reserves, Conservation Parks, Marine Parks (where within IBRA boundaries), 5(1)(g) or 5(1)(h) Reserves.
- Freehold Lands under a DBCA or National Trust Covenant.

(2) Currency of source data: IBRA v7.0 18/04/2012; DBCA Managed Lands and Waters March 31 2021; DBCA Covenants May 2020; National Trust Covenants June 2020