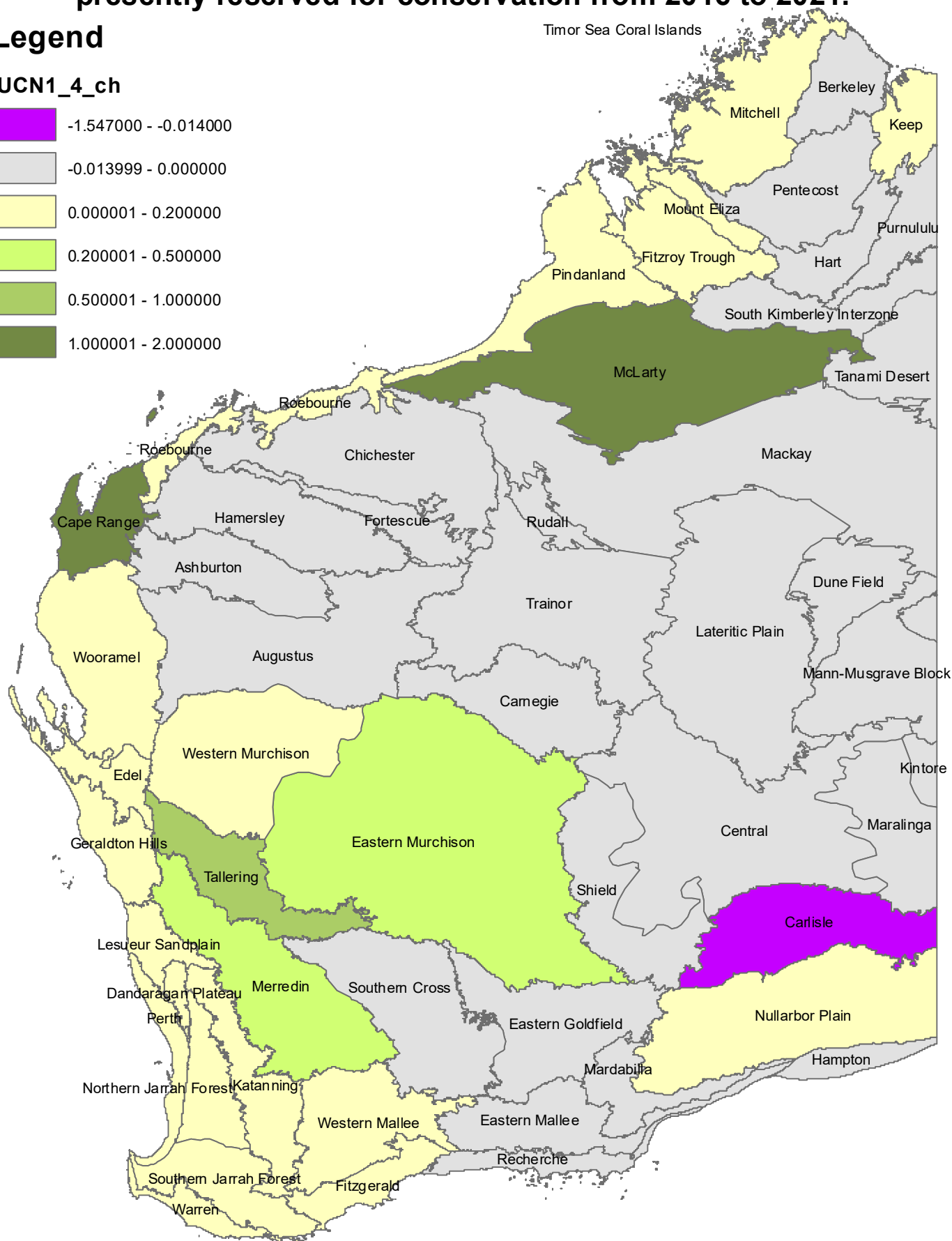
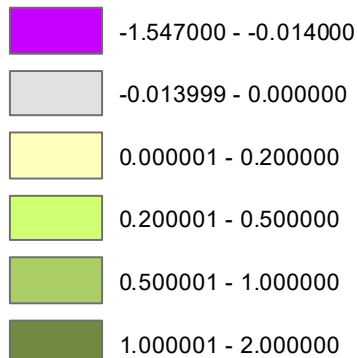


Change in the proportion of the IBRA sub-region presently reserved for conservation from 2016 to 2021.

Legend

IUCN1_4_ch



Footnotes:

- (1) DBCA-Managed land for conservation comprises the DBCA tenure categories: National Park and IUCN I-IV areas that are Nature Reserves, Conservation Parks, Marine Parks (where within IBRA boundaries), 5(1)(g) or 5(1)(h) Reserves.
- (2) Currency of source data: IBRA v7.0 18/04/2012; DBCA Managed Lands and Waters March 31 2021.