

# Swan Canning Estuary Water Quality Monitoring Project

## Weekly Water Quality Report

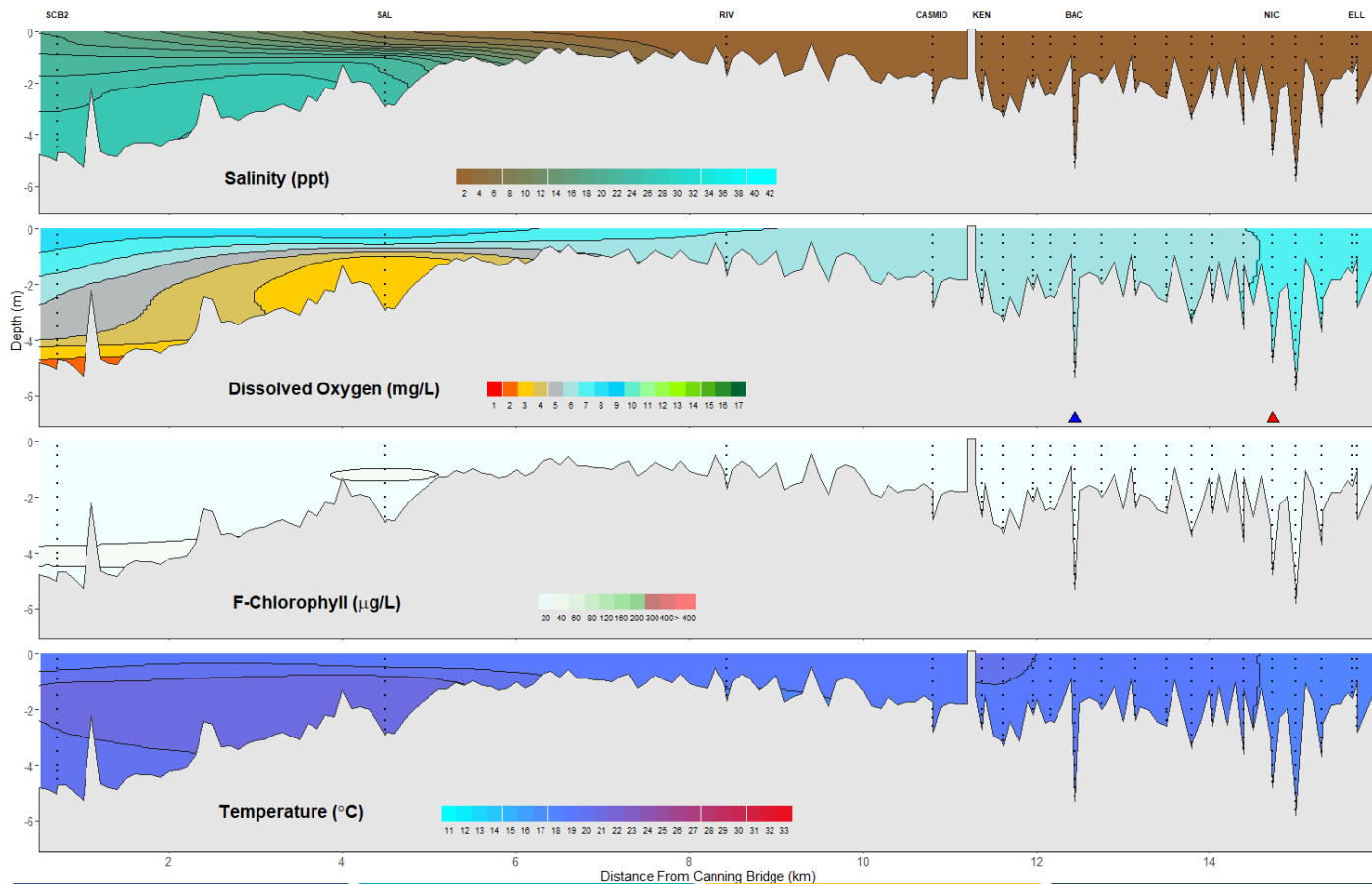
### Canning Estuary and Lower Canning River

26 October 2021

Prepared by

Rivers and Estuaries Science  
Biodiversity and Conservation Science  
Department of Biodiversity, Conservation and Attractions

# Canning Estuary and Lower Canning River - Water Quality Profiles – 26 October 2021



Date: 26 October 2021

Weather & tide conditions: Conditions were overcast with a north westerly breeze of up to 9 knots. The predicted tides at Barrack St were 1.04 m at 12:52 am (high tide) and 0.59 m at 11:46 am (low tide). Perth recorded 45.4 mm of rainfall in the week prior to sampling (Bureau of Meteorology).

Oxygenation: The Bacon St oxygenation plant was not triggered to provide oxygen and the Nicholson Rd oxygenation plant was not operational in the 24 hours prior to sampling.

Canning Estuary (SCB2 to CASMID): The Canning Estuary was brackish over saline at SCB2, brackish and highly stratified at SAL and fresh from RIV to CASMID. Surface waters were oxygenated or well oxygenated. Bottom waters were low in oxygen at SCB2 and SAL. Chlorophyll fluorescence was low throughout but peaked at SCB2. Water temperature ranged from 17.8 to 20.6 °C.

Lower Canning River (upstream of KEN): The Lower Canning River was fresh, waters were oxygenated or well oxygenated throughout. Chlorophyll fluorescence was low throughout this zone. Water temperature ranged from 17.4 to 19.3 °C.

NB: Profile plots are visual interpolations of measured parameters only. Detailed data are available at [wir.water.wa.gov.au](http://wir.water.wa.gov.au).

**Oxygenation Plant Operational Status:**

- ▲ Operating for part or all of the 24 hours prior to sampling
- ▲ Operable but not triggered to operate in the 24 hours prior to sampling
- ▲ Inoperable for part or all of the 24 hours prior to sampling

**Definitions:**

Salinity – fresh <5, brackish 5-25, saline 25-35, hypersaline >35  
Dissolved oxygen – well oxygenated >6 mg/L, oxygenated >4-6 mg/L, low oxygen >2-4 mg/L, hypoxic 0.5-2 mg/L, anoxic <0.5 mg/L

**Recommended reference:** Department of Biodiversity, Conservation and Attractions 2021. *Swan Canning Estuary water quality profile report, Canning Estuary and Lower Canning River 26 October 2021*. Rivers and Estuaries Science (<https://www.dpaw.wa.gov.au/management/swan-canning-riverpark>)