



Swan Canning Estuary Water Quality Monitoring Project

Weekly Water Quality Report

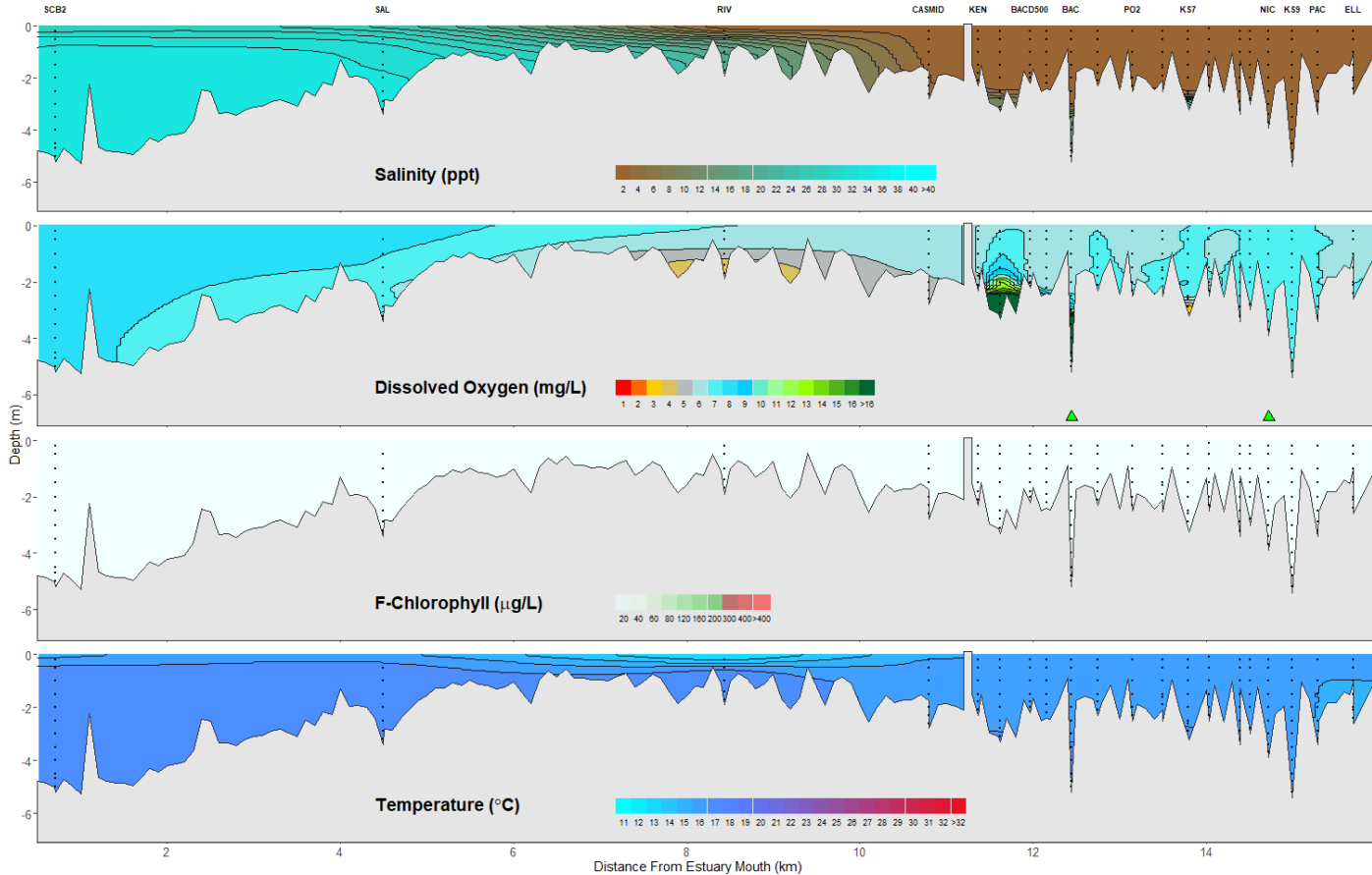
Canning Estuary and Lower Canning River

3 June 2026

Prepared by

Rivers and Estuaries Science
Biodiversity and Conservation Science
Department of Biodiversity, Conservation and Attractions

Canning Estuary and Lower Canning River - Water Quality Profiles – 3 June 2026



Date: 3 June 2026

Weather & tide conditions: Conditions were mostly clear with a north easterly breeze up to 3.5 knots. The predicted tides at Barrack St were 1.31 m at 12:32 pm (high tide) and 0.74 m at 11:02 pm (low tide). Perth recorded 62 mm of rain in the week prior to sampling (Bureau of Meteorology). A storm surge was evident from 29 May to 1 June and peaked at 78 cm at Barrack St tide station (Department of Transport and Infrastructure). This coincided with high tides, resulting in inundation of low-lying areas adjacent to the estuary. The high tides breached the Kent Street Weir and adjacent wetlands, with saltwater (25 ppt) flooding upstream to KS7. Manipulation of the Kent Street Weir gates on subsequent ebb tides purged the majority of the saltwater from the weirpool.

Oxygenation: The Bacon St and Nicholson Rd oxygenation plants were operating for part or all of the 24 hours prior to sampling.

Canning Estuary (SCB2 to CASMID): The Canning Estuary was saline SCB2 to SAL, fresh over brackish at RIV and fresh at CASMID. Waters were oxygenated to well-oxygenated, except for low oxygen bottom waters at RIV. Chlorophyll fluorescence was low throughout and water temperatures ranged from 13 to 16.7 °C.

Lower Canning River (KEN to ELL): The Lower Canning River was fresh, with brackish bottom waters at KENU300, BAC and KS7, remnants of the 25 ppt saltwater intrusion resulting from a storm surge and high tides overtopping the Kent Street Weir. Waters were oxygenated to well-oxygenated, with low oxygen bottom waters at KS7. Chlorophyll fluorescence was low and water temperatures ranged from 14.9 to 16.5 °C.

at: Profile plots are visual interpolations of measured parameters only. Detailed data are available at wir.water.wa.gov.au.

Oxygenation Plant Operational Status:

- ▲ Operating for part or all of the 24 hours prior to sampling
- ▲ Operable but not triggered to operate in the 24 hours prior to sampling
- ▲ Inoperable for part or all of the 24 hours prior to sampling

Definitions:

Salinity – fresh <5, brackish 5-25, saline 25-35, hypersaline >36
Dissolved oxygen – well-oxygenated >6 mg L⁻¹, oxygenated >4-6 mg L⁻¹, low oxygen >2-4 mg L⁻¹, hypoxic 0.5-2 mg L⁻¹, anoxic <0.5 mg L⁻¹
Chlorophyll fluorescence (low flow): low < 50 µg L⁻¹, moderate 50-150 µg L⁻¹, high 150-400 µg L⁻¹, extreme > 400 µg L⁻¹