



Swan Canning Estuary Water Quality Monitoring Project

Weekly Water Quality Report

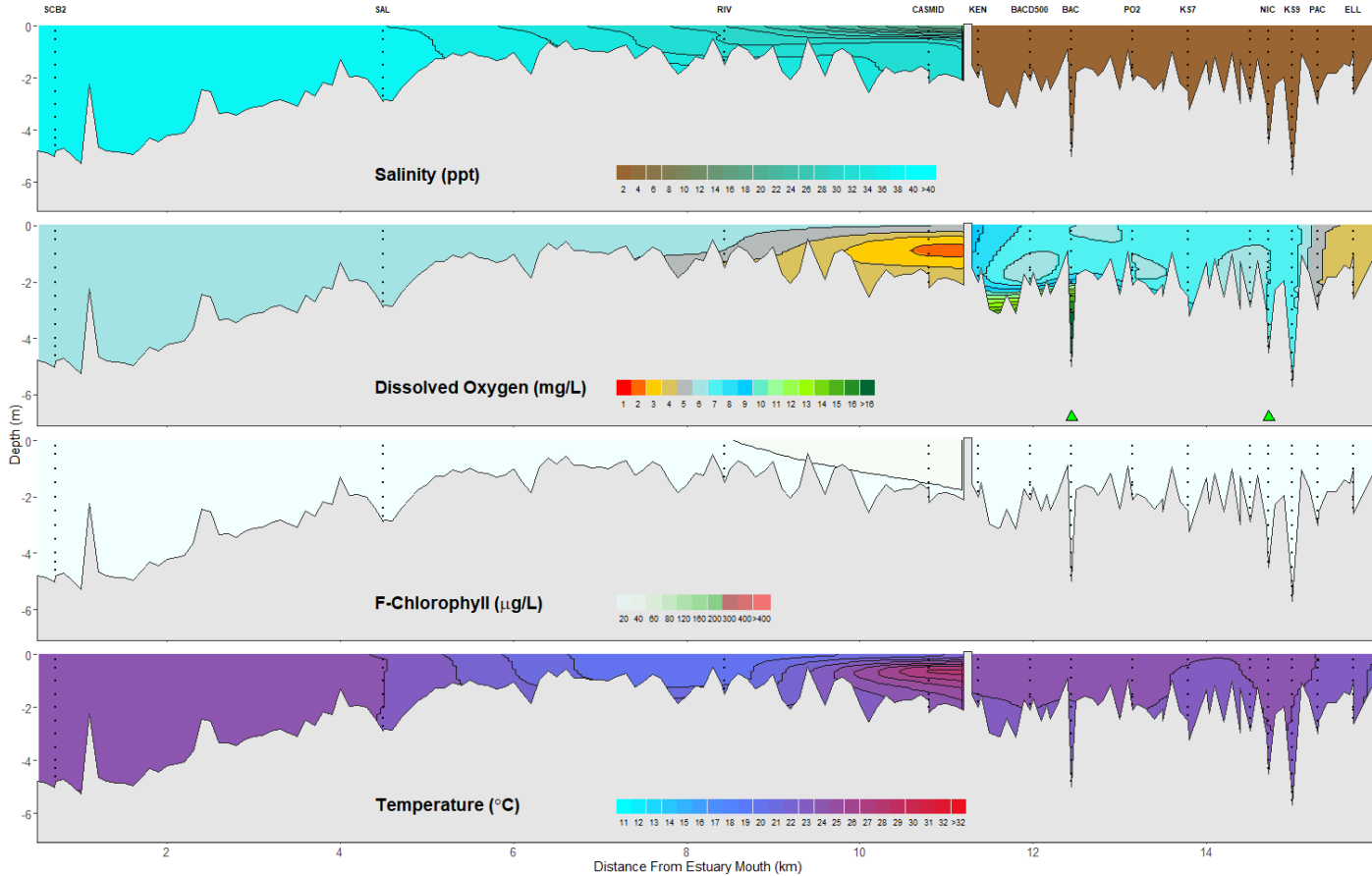
Canning Estuary and Lower Canning River

24 March 2026

Prepared by

Rivers and Estuaries Science
Biodiversity and Conservation Science
Department of Biodiversity, Conservation and Attractions

Canning Estuary and Lower Canning River - Water Quality Profiles – 24 March 2026



Date: 24 March 2026

Weather & tide conditions: Conditions were overcast with an easterly breeze of up to 6.3 knots. The predicted tides at Barrack St were 0.65 m at 2:29 am (low tide) and 1.22 m at 3:00 pm (high tide). Perth recorded no rainfall in the week prior to sampling (Bureau of Meteorology).

Oxygenation: The Bacon St and Nicholson Rd oxygenation plants were operating and providing oxygen in the 24 hours prior to sampling.

Canning Estuary (SCB2 to CASMID): The Canning Estuary ranged from hypersaline from SCB2 to SAL, saline at RIV and brackish over saline at CASMID. Waters were oxygenated throughout, except for low oxygen bottom waters at CASMID. Chlorophyll fluorescence was low throughout, with moderate levels detected in the surface waters at CASMID. Water temperatures ranged from 19.4 to 27 °C.

Lower Canning River (KEN to ELL): The Lower Canning River was fresh and oxygenated to well-oxygenated, except for low oxygen throughout the water column at ELL. Chlorophyll fluorescence was low and water temperatures ranged from 22.2 to 23.6 °C.

NB: Profile plots are visual interpolations of measured parameters only. Detailed data are available at wir.water.wa.gov.au.

Oxygenation Plant Operational Status:

- ▲ Operating for part or all of the 24 hours prior to sampling
- ▲ Operable but not triggered to operate in the 24 hours prior to sampling
- ▲ Inoperable for part or all of the 24 hours prior to sampling

Definitions:

Salinity – fresh <5, brackish 5-25, saline 25-35, hypersaline >36
Dissolved oxygen – well-oxygenated >6 mg L⁻¹, oxygenated >4-6 mg L⁻¹, low oxygen >2-4 mg L⁻¹, hypoxic 0.5-2 mg L⁻¹, anoxic <0.5 mg L⁻¹
Chlorophyll fluorescence (low flow): low < 50 µg L⁻¹, moderate 50-150 µg L⁻¹, high 150-400 µg L⁻¹, extreme > 400 µg L⁻¹