



Swan Canning Estuary Water Quality Monitoring Project

Weekly Water Quality Report

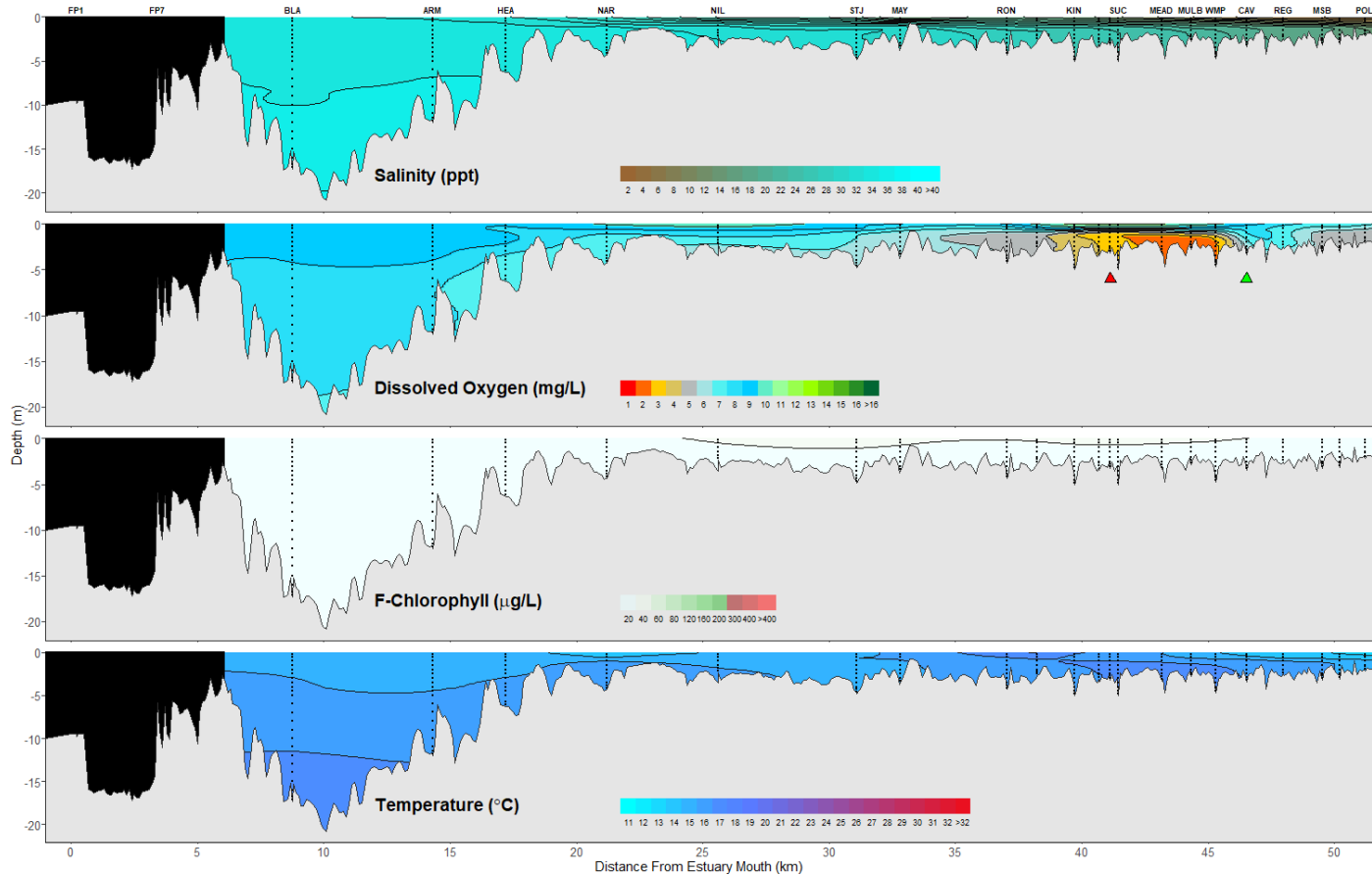
Lower Swan Canning Estuary to Upper Swan Estuary

22 June 2026

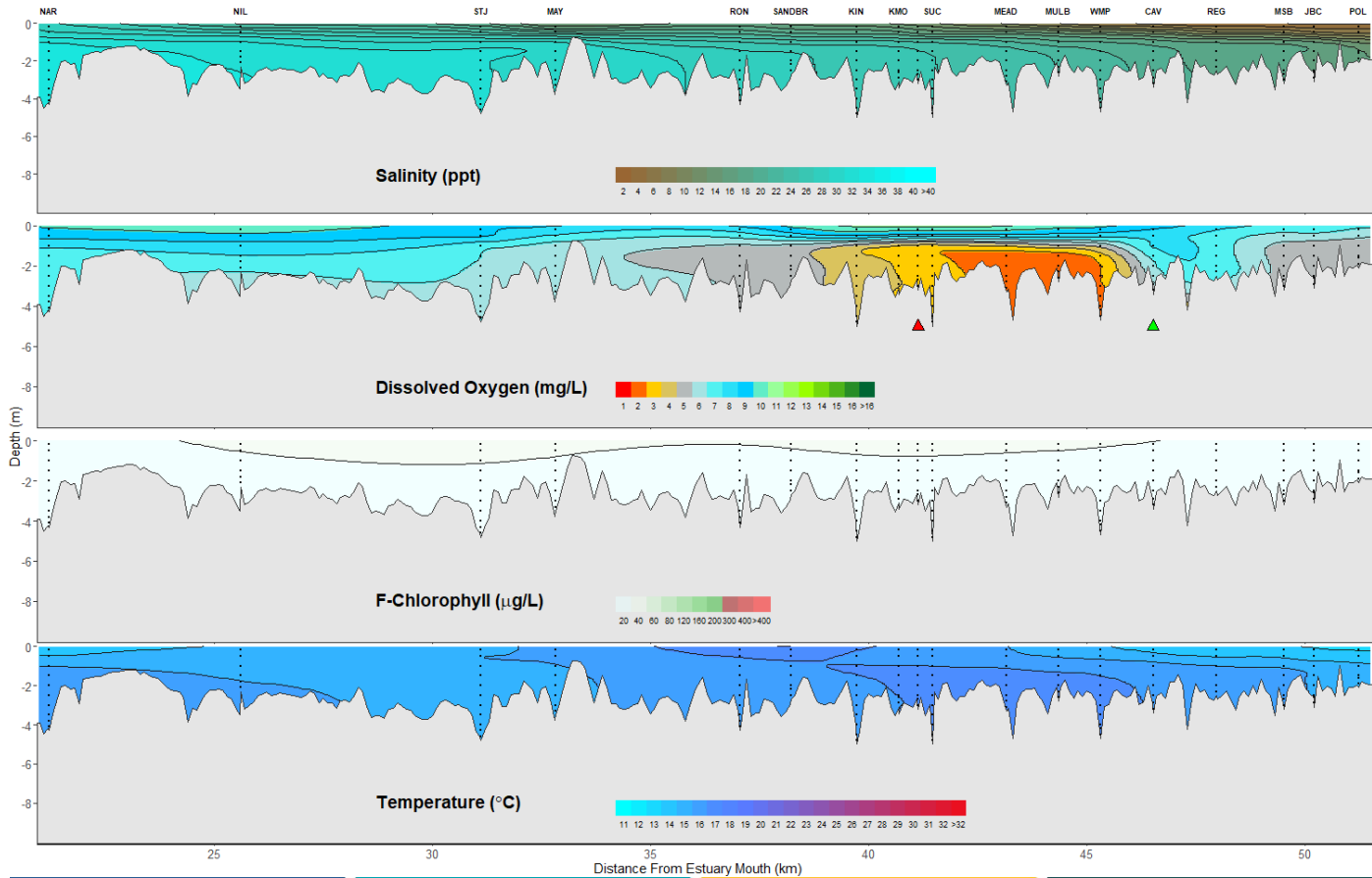
Prepared by

Rivers and Estuaries Science
Biodiversity and Conservation Science
Department of Biodiversity, Conservation and Attractions

Swan Canning Estuary - Water Quality Profiles – 22 June 2026



Middle and Upper Swan Estuary - Water Quality Profiles – 22 June 2026



Date: 22 June 2026

Weather & tide conditions: Conditions were overcast with a prevailing north easterly breeze of up to 3.8 knots. The predicted tides at Barrack St were 1.08 m at 9:58 am (high tide) and 0.86 m at 8:54 pm (low tide). Perth recorded no rainfall in the week prior to sampling (Bureau of Meteorology).

Oxygenation: The Caversham oxygenation plant was operable and triggered to provide oxygen in the 24 hours prior to sampling, whereas the Guildford oxygenation plant was inoperable during this period.

Lower Swan Canning Estuary (BLA to NAR): The Lower Swan Canning Estuary was saline and well-oxygenated throughout with low chlorophyll fluorescence. Water temperatures ranged from 13.8 to 16.2 °C.

Middle Swan Estuary (NIL to RON): The Middle Swan Estuary was saline with brackish surface waters. Waters were oxygenated to well-oxygenated. Chlorophyll fluorescence was low, with moderate levels in surface waters of STJ. Water temperatures ranged from 14.2 to 16.6 °C.

Upper Swan Estuary (SANDBR to POL): The Upper Swan Estuary was brackish with saline bottom waters from SANDBR to KMO, and fresh surface waters from MSB to POL. Waters were oxygenated to well-oxygenated, with low oxygen bottom waters from KIN to SUC, and hypoxic bottom waters from MEAD to WMP. Chlorophyll fluorescence was low, with moderate levels in surface waters of KMO. Water temperatures ranged from 13 to 17 °C.

NB: Profile plots are visual interpolations of measured parameters only. Detailed data are available at wir.water.wa.gov.au.

Oxygenation Plant Operational Status:

- ▲ Operating for part or all of the 24 hours prior to sampling
- ▲ Operable but not triggered to operate in the 24 hours prior to sampling
- ▲ Inoperable for part or all of the 24 hours prior to sampling

Definitions:

Salinity – fresh <5, brackish 5-25, saline 25-35, hypersaline >36 ppt
Dissolved oxygen – well-oxygenated >6 mg L⁻¹, oxygenated >4-6 mg L⁻¹, low oxygen >2-4 mg L⁻¹, hypoxic 0.5-2 mg L⁻¹, anoxic <0.5 mg L⁻¹
Chlorophyll fluorescence (low flow): low < 50 µg L⁻¹, moderate 50-150 µg L⁻¹, high 150-400 µg L⁻¹, extreme > 400 µg L⁻¹