



Swan Canning Estuary Water Quality Monitoring Project

Weekly Water Quality Report

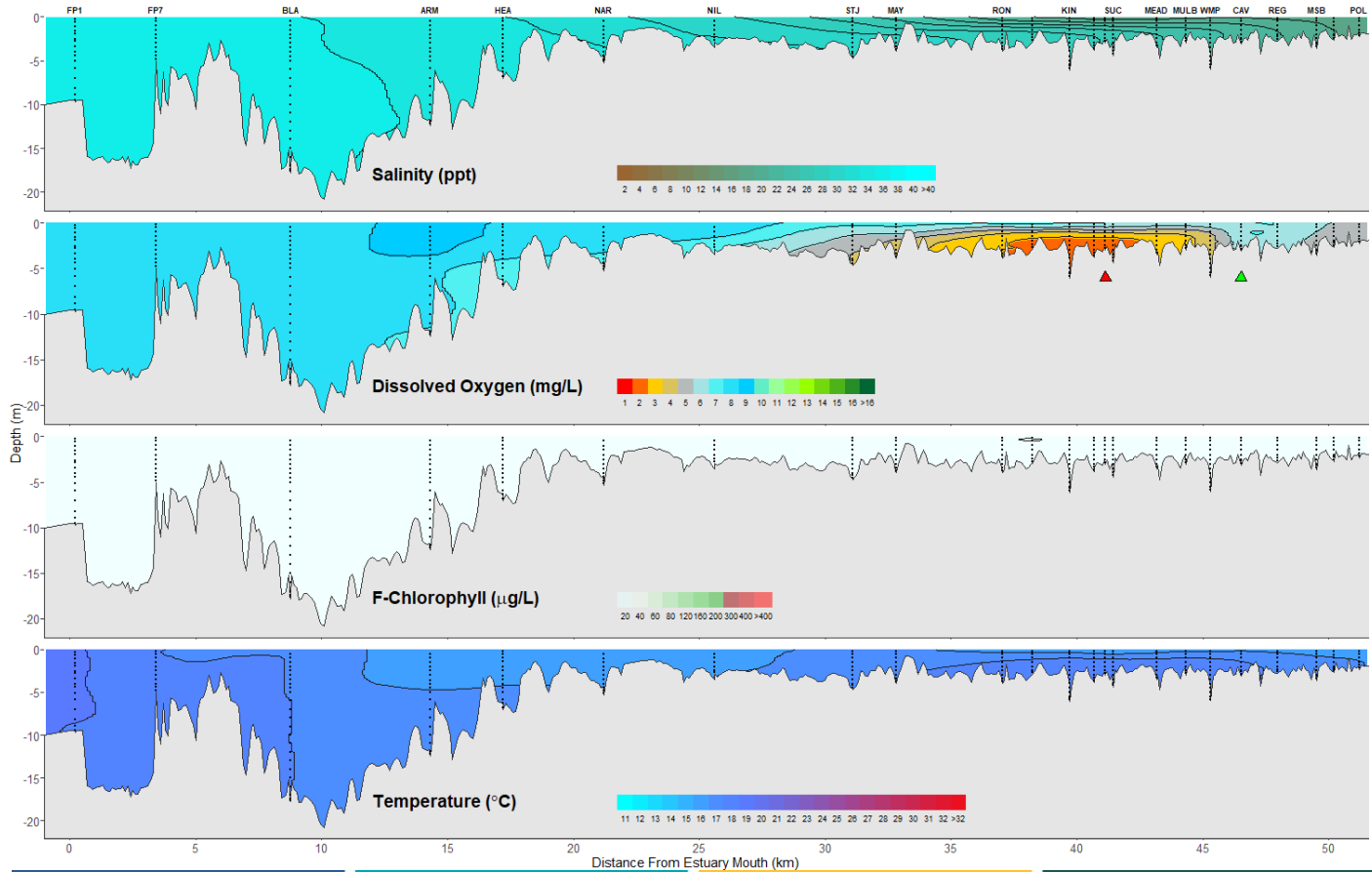
Lower Swan Canning Estuary to Upper Swan Estuary

15 June 2026

Prepared by

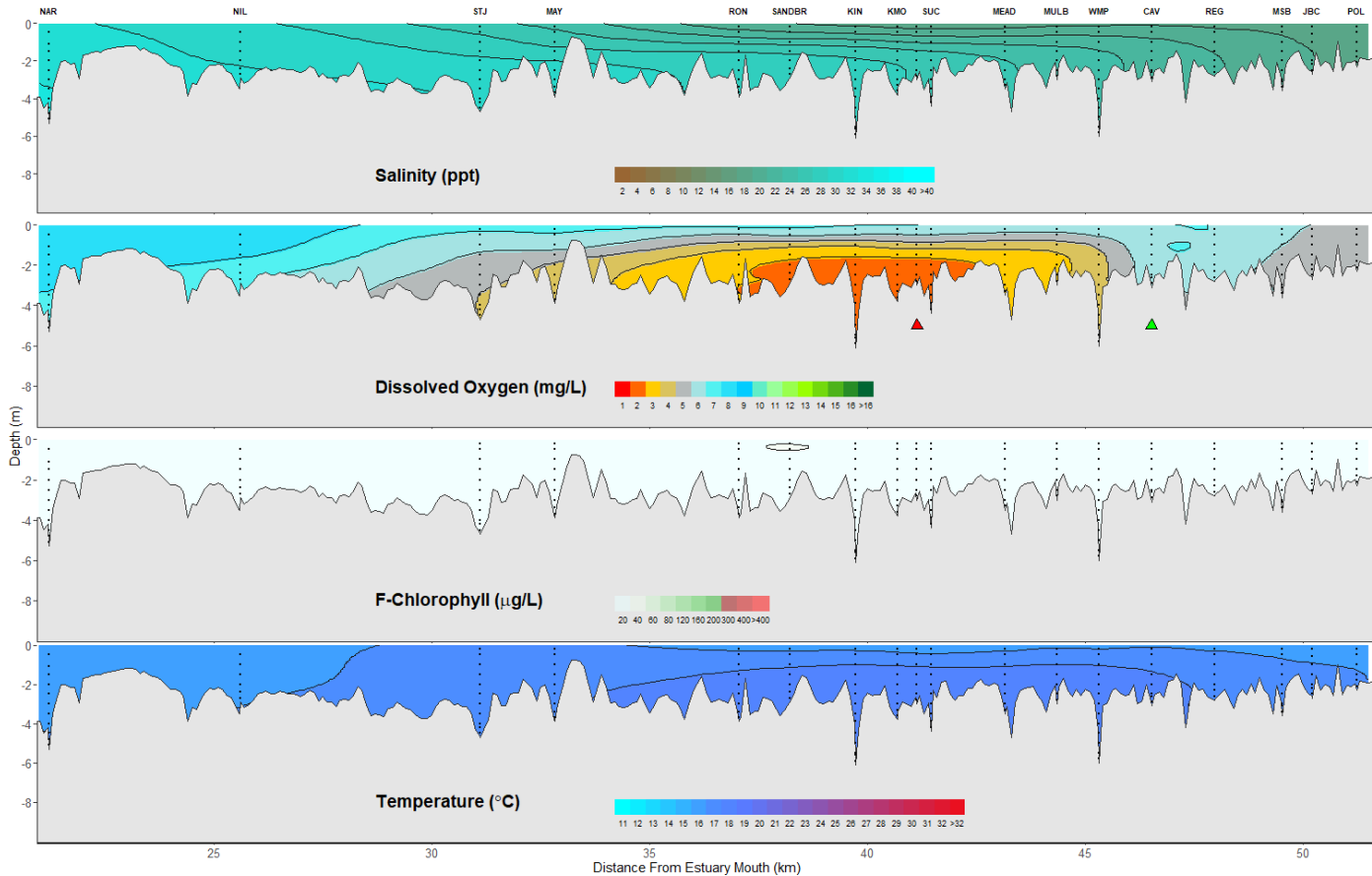
Rivers and Estuaries Science
Biodiversity and Conservation Science
Department of Biodiversity, Conservation and Attractions

Swan Canning Estuary - Water Quality Profiles – 15 June 2026



Distance From Estuary Mouth (km)

Middle and Upper Swan Estuary - Water Quality Profiles – 15 June 2026



Date: 15 June 2026

Weather & tide conditions: Conditions were overcast with predominantly south easterly winds of up to 10.8 knots. The predicted tides at Barrack St were 1.41 m at 11:12 am (high tide) and 0.62 m at 10:07 pm (low tide). Perth recorded 43 mm of rainfall in the week prior to sampling (Bureau of Meteorology).

Oxygenation: The Guildford oxygenation plant was inoperable, and the Caversham oxygenation plant was operating and providing oxygen in the 24 hours prior to sampling.

Lower Swan Canning Estuary (FPI to NAR): The Lower Swan Canning Estuary was saline and well-oxygenated throughout with low chlorophyll fluorescence. Water temperatures ranged from 15.2 to 18.3 °C.

Middle Swan Estuary (NIL to RON): The Middle Swan Estuary was saline with brackish surface waters from STJ to RON. Waters were oxygenated to well-oxygenated, with low oxygen bottom waters from STJ to MAY and hypoxic bottom waters at RON. Chlorophyll fluorescence was low and water temperatures ranged from 15.4 to 17.3 °C.

Upper Swan Estuary (SANDBR to POL): The Upper Swan Estuary was brackish with saline bottom waters from SANDBR to SUC. Waters were oxygenated, with hypoxic bottom waters from SANDBR to SUC and low oxygen bottom and mid-column waters from MEAD to WMP. Chlorophyll fluorescence was low and water temperatures ranged from 15.6 to 17.6 °C.

NB: Profile plots are visual interpolations of measured parameters only. Detailed data are available at wir.water.wa.gov.au.

Oxygenation Plant Operational Status:

- ▲ Operating for part or all of the 24 hours prior to sampling
- ▲ Operable but not triggered to operate in the 24 hours prior to sampling
- ▲ Inoperable for part or all of the 24 hours prior to sampling

Definitions:

Salinity – fresh <5, brackish 5-25, saline 25-35, hypersaline >36 ppt
Dissolved oxygen – well-oxygenated >6 mg L⁻¹, oxygenated >4-6 mg L⁻¹, low oxygen >2-4 mg L⁻¹, hypoxic 0.5-2 mg L⁻¹, anoxic <0.5 mg L⁻¹
Chlorophyll fluorescence (low flow): low < 50 µg L⁻¹, moderate 50-150 µg L⁻¹, high 150-400 µg L⁻¹, extreme > 400 µg L⁻¹

Recommended reference: Department of Biodiversity, Conservation and Attractions, 2026. *Swan Canning Estuary water quality profile report, Lower Swan Canning Estuary to Upper Swan Estuary 15 June 2026*. Rivers and Estuaries Science (<https://www.dpaw.wa.gov.au/management/swan-canning-riverpark>)