



Swan Canning Estuary Water Quality Monitoring Project

Weekly Water Quality Report

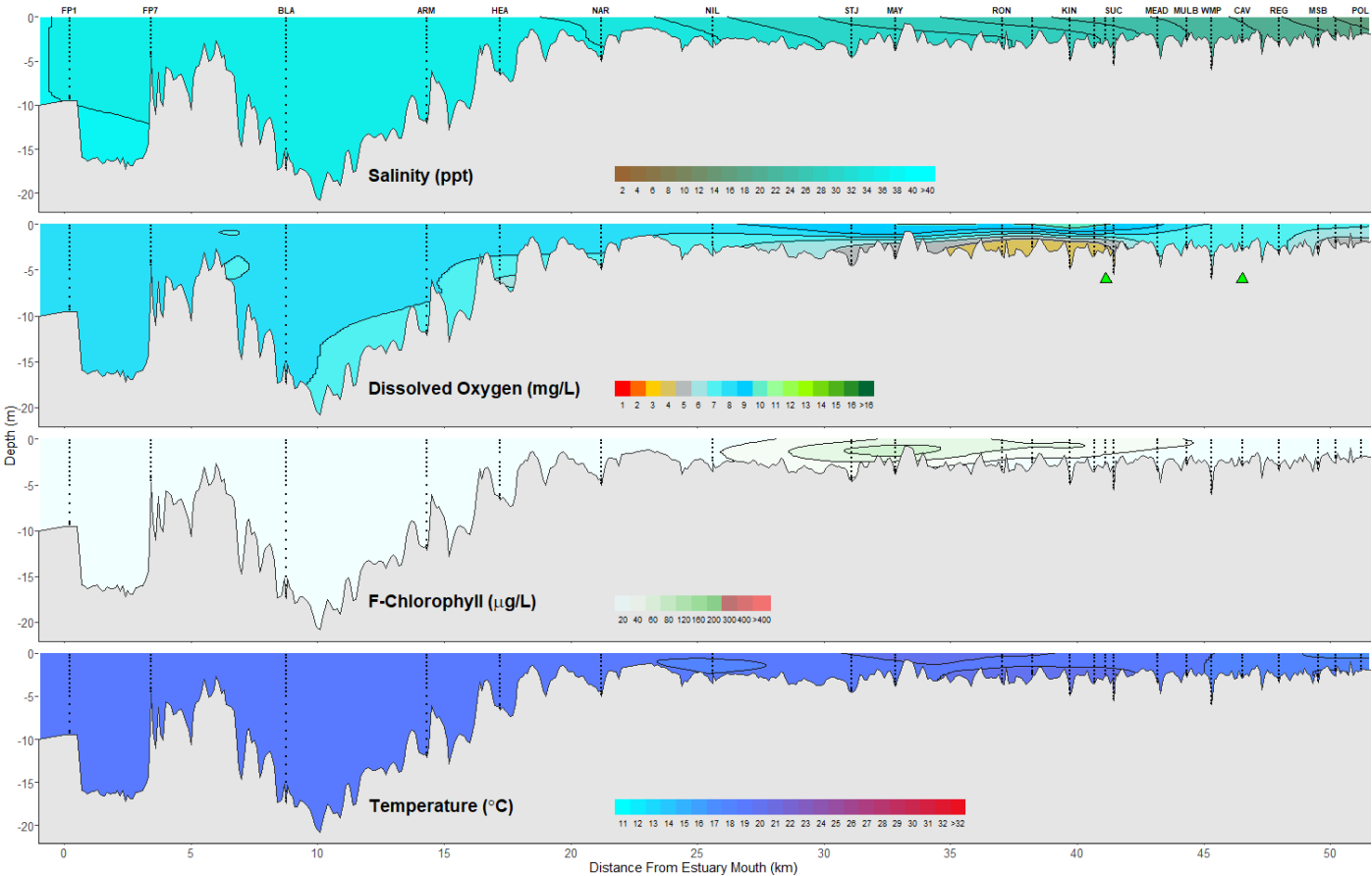
Lower Swan Canning Estuary to Upper Swan Estuary

4 May 2026

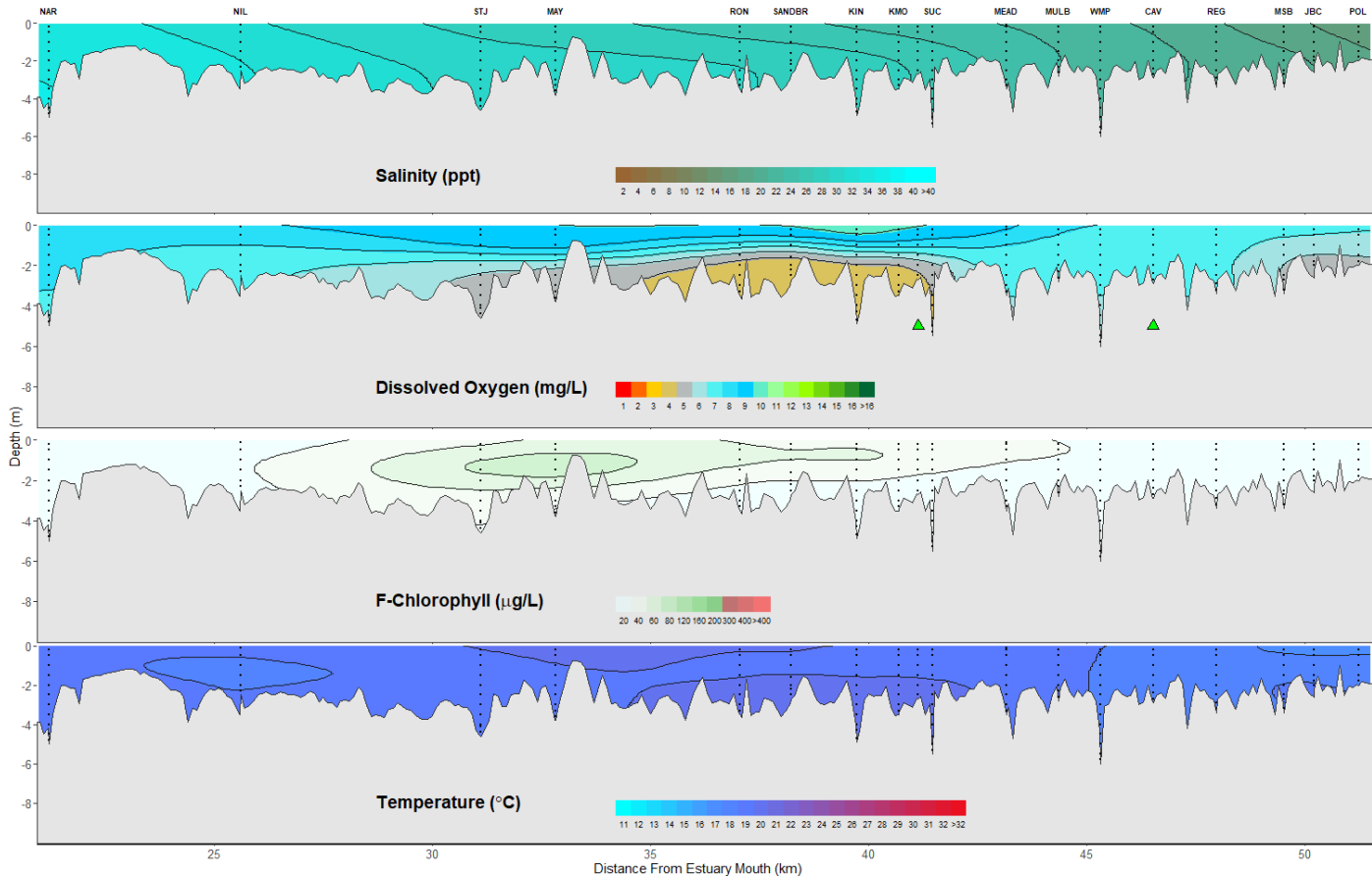
Prepared by

Rivers and Estuaries Science
Biodiversity and Conservation Science
Department of Biodiversity, Conservation and Attractions

Swan Canning Estuary - Water Quality Profiles – 4 May 2026



Middle and Upper Swan Estuary - Water Quality Profiles – 4 May 2026



Date: 4 May 2026

Weather & tide conditions: Conditions were clear with a variable breeze of up to 8.6 knots. The predicted tides at Barrack St were 1.28 m at 12:21 pm (high tide) and 0.75 m at 10:49 pm (low tide). Perth recorded 11.6 mm of rainfall in the week prior to sampling (Bureau of Meteorology).

Oxygenation: The Guildford and Caversham oxygenation plants were operable and triggered to provide oxygen in the 24 hours prior to sampling.

Lower Swan Canning Estuary (FPI to NAR): The Lower Swan Canning Estuary was saline throughout, and waters were oxygenated to well-oxygenated. Chlorophyll fluorescence was low and water temperatures ranged from 18.1 to 18.9 °C.

Middle Swan Estuary (NIL to RON): The Middle Swan Estuary was saline throughout and waters were oxygenated to well-oxygenated, except for low oxygen bottom waters at RON. Chlorophyll fluorescence was low, except for moderate levels detected in the middle column from STJ to RON. Water temperatures ranged from 17.9 to 19.4 °C.

Upper Swan Estuary (SANDBR to POL): The Upper Swan Estuary was brackish over saline at from SANDBR to SUC, and brackish from MEAD to POL. Waters were oxygenated to well-oxygenated, except for low oxygen bottom waters from SANDBR to SUC. Chlorophyll fluorescence was low, except for high levels detected from KIN, KMO, and SUC. Water temperatures ranged from 16.8 to 19.5 °C.

NB: Profile plots are visual interpolations of measured parameters only. Detailed data are available at wir.water.wa.gov.au.

Oxygenation Plant Operational Status:

- ▲ Operating for part or all of the 24 hours prior to sampling
- ▲ Operable but not triggered to operate in the 24 hours prior to sampling
- ▲ Inoperable for part or all of the 24 hours prior to sampling

Definitions:

Salinity – fresh <5, brackish 5-25, saline 25-35, hypersaline >36 ppt
Dissolved oxygen – well-oxygenated >6 mg L⁻¹, oxygenated >4-6 mg L⁻¹, low oxygen >2-4 mg L⁻¹, hypoxic 0.5-2 mg L⁻¹, anoxic <0.5 mg L⁻¹
Chlorophyll fluorescence (low flow): low < 50 µg L⁻¹, moderate 50-150 µg L⁻¹, high 150-400 µg L⁻¹, extreme > 400 µg L⁻¹