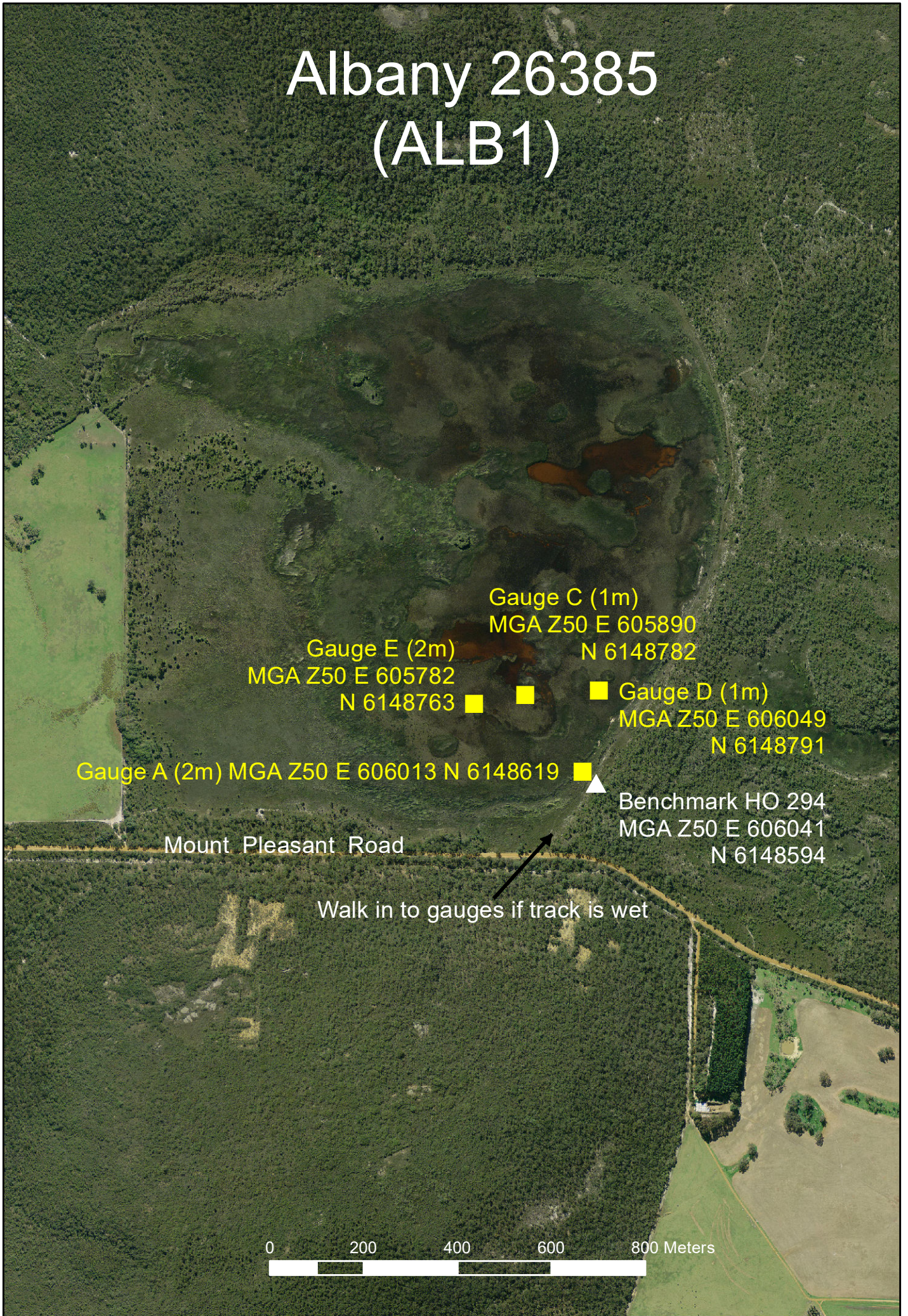


Albany 26385 (ALB1)



PF Olsen Plantation Gate
South Coast Highway
MGA Z50 E 616845 N 6149779

Albany 27157 (ALB2)

Ensure to comply with dieback hygiene.
If reserve access wet contact PF Olsen
(Bob Edwards) to access via plantation
T: 9841 4300
M: 0427 441 276
(DBCA key on Plantation gate)

Gauge A (2m)
MGA Z50 E 618751 N 6147494

Benchmark HO 295
▲ MGA Z50 E 618826 N 6147490

■ Gauge B (1m)
MGA Z50 E 618787 N 6147383

■ Gauge C (1.5m)
MGA Z50 E 618776 N 6147180

Track point # 2
MGA Z50 E 620057
N 6146613

West to South
Coast Highway

Cheyne Road

Access track point #1
MGA Z50 E 619895
N 6146190

0 200 400 600 800 Meters

Altham

Gauge A
MGA Z50 E 634473 ■
N 6302658

Benchmark HD 228
MGA Z50 E 634562 ▲
N 6302593

Rasmussen Road

Access track

0 250 500 Meters



Anderson

Benchmark HO 285
MGA Z50 E 588666
N 6217158

Gauge D (3m) MGA Z50 E 588667, N 6217169

Gauge B (2m) MGA Z50 E 588694 N 6217163

Gauge E (2m) MGA Z50 E 588752, N 6217125

0 200 400 Meters

Toolbrunup Road



Ardath

Old Beverley Road

Benchmark HL 407 MGA Z50 E 609068
N 6448377

Gauge A (2m)
MGA Z50 E 609060 N 6448364

0 200 400 Meters



Newdegate Ravensthorpe Road

Lake King

ATKINS YATE

Newdegate Ravensthorpe Road

Owner Tony G.
Ph: 9493 6116
M: 0433 942 156

Gauge D (3m)
MGA Z50 E 749968 N 6330601

Gauge F (1m)
MGA Z50 E 749910
N 6330737

Gauge C (4m)
MGA Z50 E 749974 N6330576

Gauge E (2m)
MGA Z50 E 749966
N 6330619

Gauge B (5m)
MGA Z50 E 749976 N 6330550

Gates

Benchmark HT 298
MGA Z50 E 750025
N 6330530

0 500 1,000 1,500 2,000 Meters



Lake Bambun

Bambun Road

19kms south to Muchea
at Brand Hwy

Access track

Benchmark HZ 930

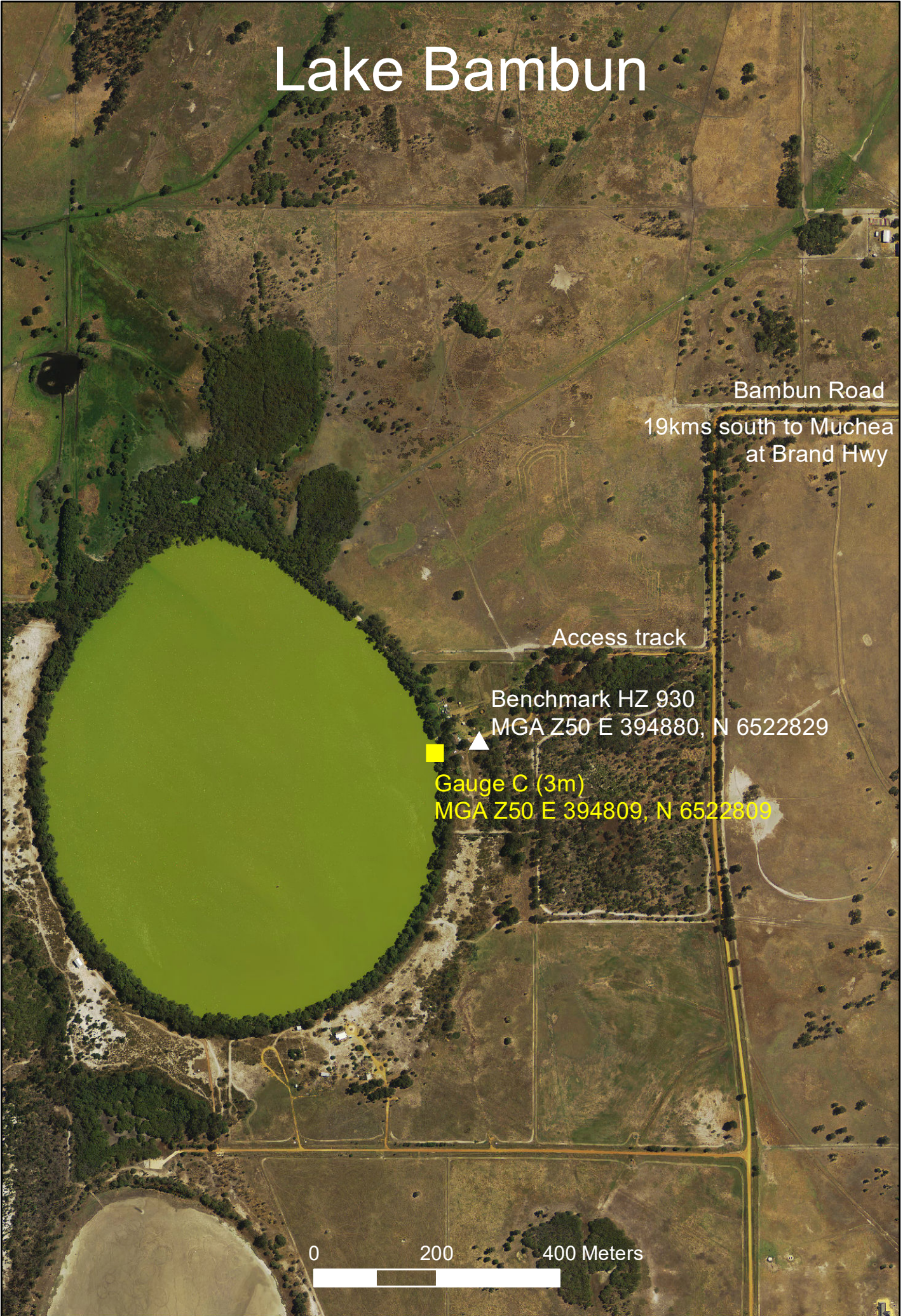
MGA Z50 E 394880, N 6522829



Gauge C (3m)

MGA Z50 E 394809, N 6522809

0 200 400 Meters



Bennetts

Old Newdegate Road

7.8km east to Millsteed Road

Sandy track - 4WD Access Only

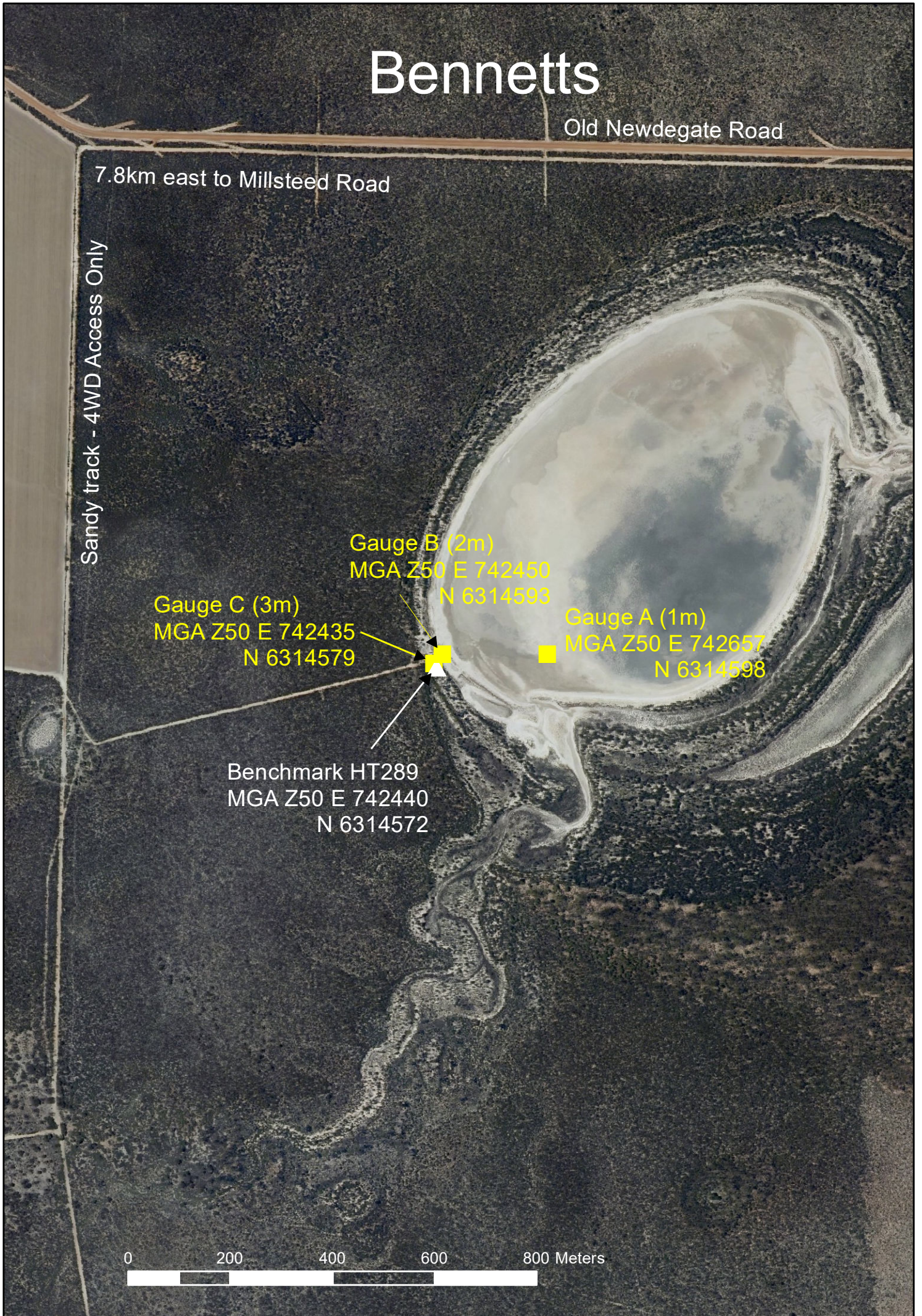
Gauge C (3m)
MGA Z50 E 742435
N 6314579

Gauge B (2m)
MGA Z50 E 742450
N 6314593

Gauge A (1m)
MGA Z50 E 742657
N 6314598

Benchmark HT289
MGA Z50 E 742440
N 6314572

0 200 400 600 800 Meters



Beverley

Note: There are 3 DoW gauges installed in the channel, the top being 10m (same height as causeway crossing) then a 9m and 8m gauge. To convert DoW gauge readings to DBCA lake depth deduct 8.16m

Yenyenning Lakes

Qualandary Road

Qualandary Crossing

Dept Water gauge (10m)
MGA Z50 E 514297, N 6432634

Benchmark Dept Water
MGA Z50 E 514297, N 6432612

0 100 200 300 400 Meters



Big Boom Swamp

Gauge B (1m)
MGA Z51 E 425471
N 6251705

Depth loggers

Gauge A (2m)
MGA Z51 E 425459
N 6251692

Benchmark DBCA
MGA Z51 E 425452, N 6251675

Follow flag tape
Walk track

Rain gauge

WGS 84 Z51
E 425468, N 6251226

400m

200m

4 wheel drive access track
1400m
Dry road conditions only

Cape Le Grand Road



Merivale Road

Big Boom Location Map

UCL

Cape Le Grand Road

Approximately 6.6km
from Merivale Road

Big Boom Swamp

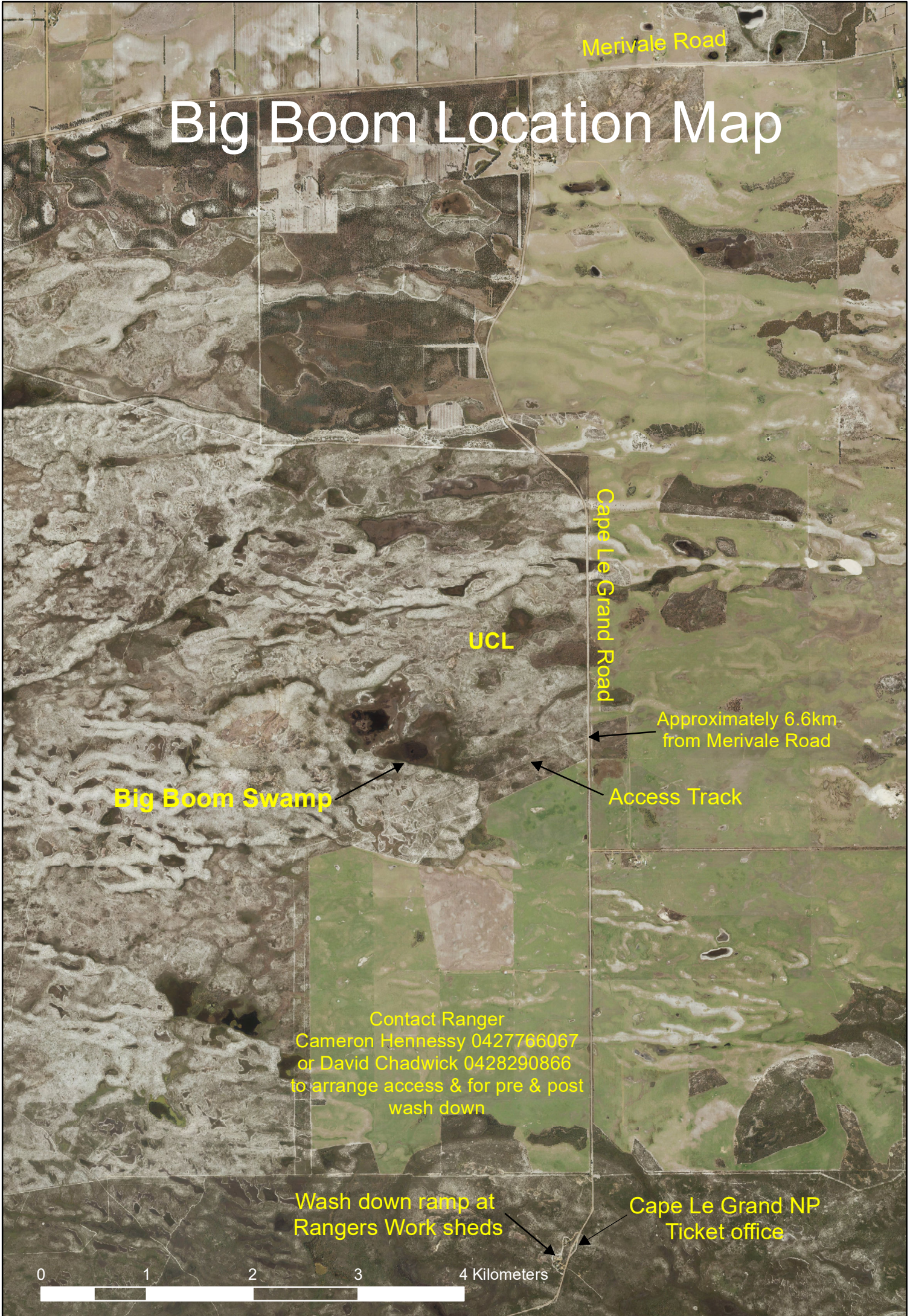
Access Track

Contact Ranger
Cameron Hennessy 0427766067
or David Chadwick 0428290866
to arrange access & for pre & post
wash down

Wash down ramp at
Rangers Work sheds

Cape Le Grand NP
Ticket office

0 1 2 3 4 Kilometers



Boat Harbour 1

Boat Harbour Road

Gauge A (2m)
MGA Z50 E 508224, N 6124976



▲ Benchmark HO 286
MGA Z50 E 508245, N 6124962
(4.98 km to South Coast Hwy)

0

400

800 Meters



Boyup Brook 18239 (Kulikup NR)

Walshaws
Road

Kulikup North Road

Gauge A (1m)
MGA Z50 E 469675 ■
N 6257230

▲
Benchmark HC 292
MGA Z50 E 469777
N 6257199

Kulikup

0 100 200 Meters



Broadwater

Bussell Highway

Broadwater Blvd

Access track

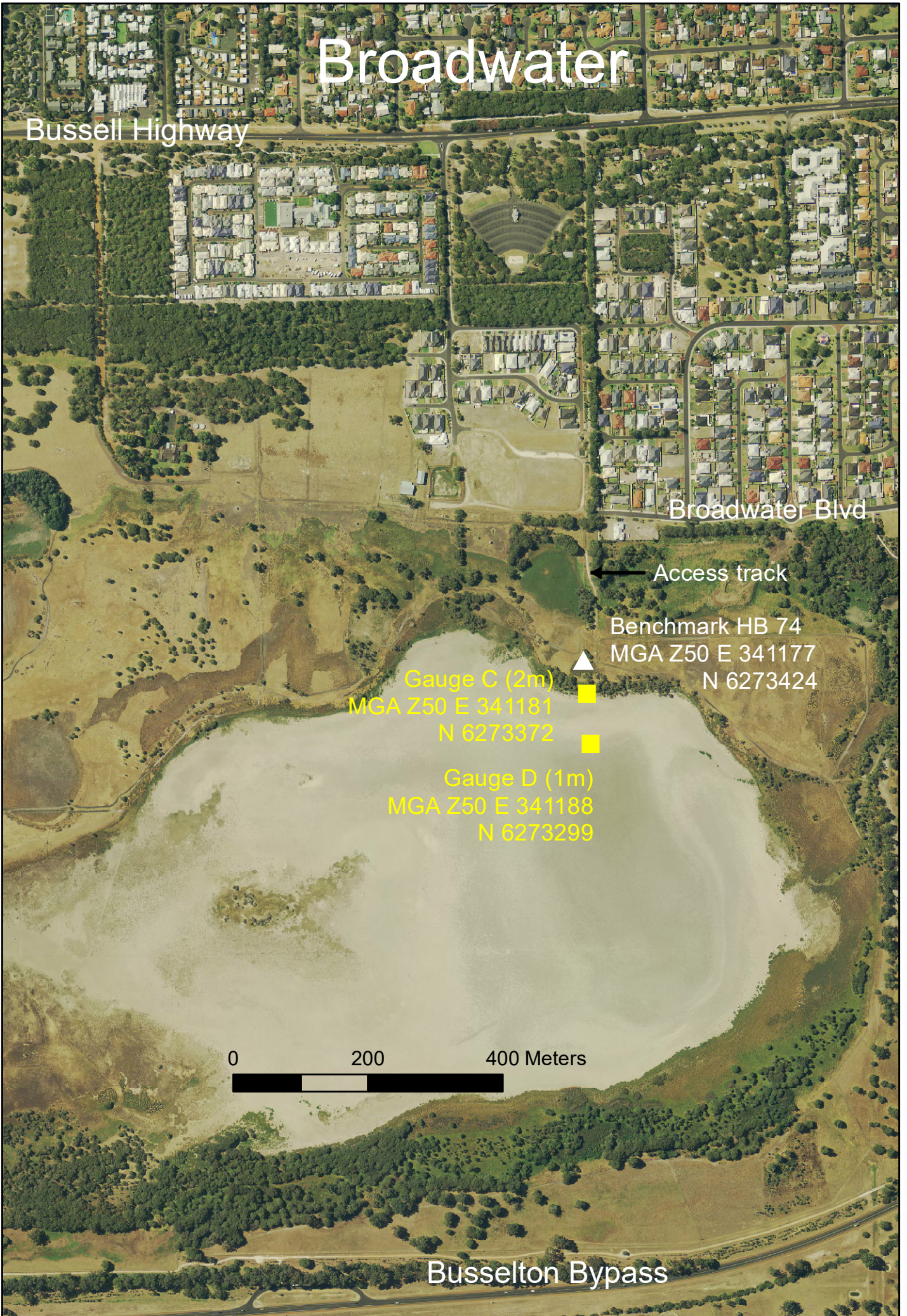
Benchmark HB 74
MGA Z50 E 341177
N 6273424

Gauge C (2m)
MGA Z50 E 341181
N 6273372

Gauge D (1m)
MGA Z50 E 341188
N 6273299

0 200 400 Meters

Busselton Bypass



BROW_WHIW

White Water

Benchmark HL 423 MGA Z50 E 558770, N 6399914

Gauge B (1m) MGA Z50 E 559113, N 6399864

Gauge A (2m) MGA Z50 E 558827, N 6399907

Shirley Road

to Wickipin Corrigin Road

Brown

Gauge B (1m)

MGA Z50 E 559783, N 6397862

Gauge A (2m)

MGA Z50 E 559665, N 6397777

Benchmark HL 424

MGA Z50 E 559606, N 6397735

0 400 800 Meters



Bryde

Benchmark HT290
MGA Z50 E 669625
N 6308051

Gauge B (2m)
MGA Z50 E 669651
N 6308049

Gauge C (1m)
MGA Z50 E 669781
N 6307951

2.6km west to
Newdegate Road

Lake Bryde Road

0 100 200 300 400 Meters



Byenup

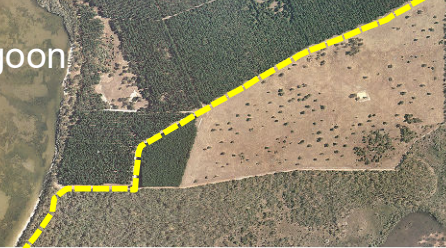
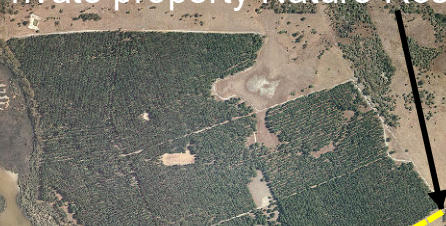
Muir's Highway

Geordinup Road

Contact Private Property owner
Alida & Jason Parke Ph 9857 1024
to advise of intention to access Byenup

Private property Nature Reserve access

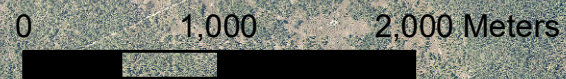
Byenup Lagoon



Gauge A (3m)
MGA Z50 E 476400
N 6182443

Benchmark M 682
MGA Z50 E 476449
N 6182437

Gauge B (2m) directly into lake
approx. 10m from gauge A



Lake Campion

Stock Road

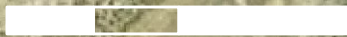
Benchmark HU 409
MGA Z50 E 627676, N 6554227

Access track off gravel road

Gauge B (2m)
MGA Z50 E 627738, N 6554119

Gauge D (1m)
MGA Z50 E 627750, N 6554107

0 200 400 Meters



Casuarina

Ranford Road
(5.4 km east to Stott Road)

Sandy winding track

Benchmark HD 208
MGA Z50 E 569525
N 6277315

Subject to flooding

Gauge C (2m)
MGA Z50 E 569550
N 6277282

0 0.5 1 1.5 2 Kilometers



Chandala

Gauge B (1m)

■ MGA Z 50 E 400841
N 6514648

Gauge A (2m)

■ MGA Z 50 E 400717
N 6514496

● BM HZ 922

■ MGA Z50 E 400545
N 6514425

Gate- DBCA 41 key

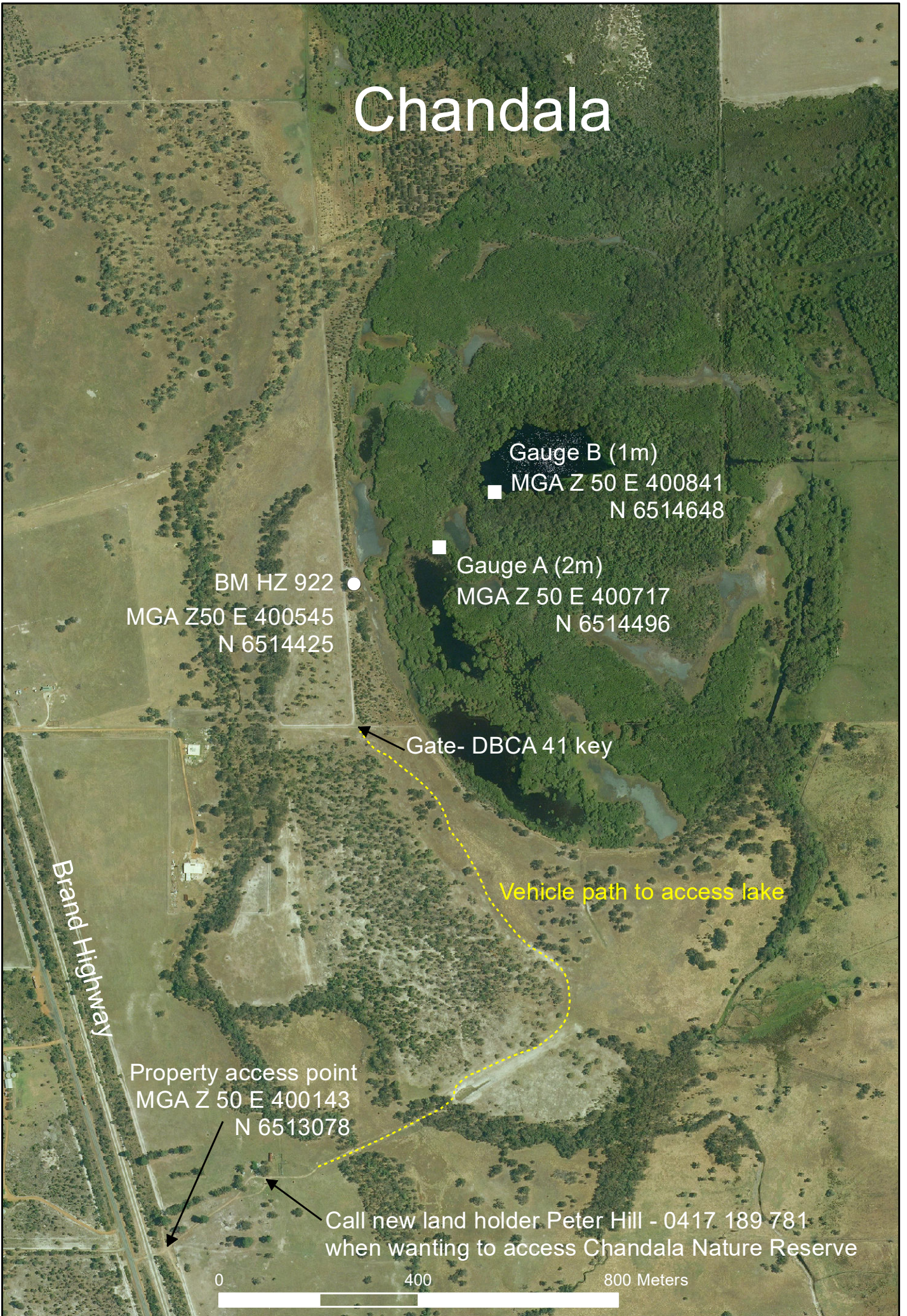
Vehicle path to access lake

Brand Highway

Property access point
■ MGA Z 50 E 400143
N 6513078

Call new land holder Peter Hill - 0417 189 781
when wanting to access Chandala Nature Reserve

0 400 800 Meters



Lake Clifton

Gauge D (4m) MGA Z50 E 373884, N 6376164



Gauge C (5m)
MGA Z50 E 373963, N 6376142



Car Park



Benchmark HR 185
MGA Z50 E 374037, N 6376139

Mt John Road

0 50 100 Meters



Collets

Fitzgerald River National Park
Check road closure information at
<https://travelmap.mainroads.wa.gov.au>

Gauge A (1m)
MGA Z50 E 721656
N 6214431

Park on road verge at
MGA Z50 E 721594 N 6214187
Access depth gauge via descent
through dense prickly vegetation

DBCA datum
MGA Z50 E 721678
N 6214392

Pabelup Drive

Quaalup North Road

Gairdner Road

0 1,000 2,000 Meters



Coomalbidgup

Gauge D (1m)
■ MGA Z51 E 349212
N 6268134

Gauge B (3m)
MGA Z51 E 349156
N 6267934

Gauge C (2m)
■ MGA Z51 E 349162
N 6267996

Gauge E (4m)
MGA Z51 E 349145
N 6267916

Gauge A (4m)
■ MGA Z51 E 349178
N 6267917

▲ Benchmark UR 276
MGA Z51 E 349163
N 6267892

Parking and picnic area

South Coast Highway

57km east to Esperance

0 100 200 Meters

Coomelberrup

Flats Road
(If wet access via Mutters Road)

Gauge A (1m)
MGA Z50 E 573013
N 6303180

Benchmark HD 211
MGA Z50 E 573060
N 6303130

Gauge B (2m)
MGA Z50 573049
N 6303143

4WD sandy track
(Caution when wet)

Mutters Road
(East to Datatine Road)

0 0.5 1 1.5 2 Kilometers

Corrigin 12900 Paperbark Swamp NR

Benchmark HL 426
MGA Z50 E603415, N 6413294

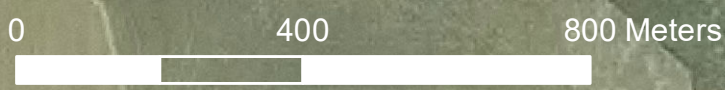
Gauge A (2m) MGA E 603379, N 6413203

Gauge C (2m) MGA Z50 E 603362, N 6413087

Dam

Willis Road

to Corrigin
Condinin Road



Coyrecup

Coyrecup Road

Lake Coyrecup Road

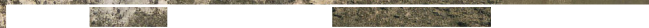
Benchmark HD 207
MGA Z50 E 577072
N 6268374

Gauge C (1m)
MGA Z50 E 577058
N 6268622

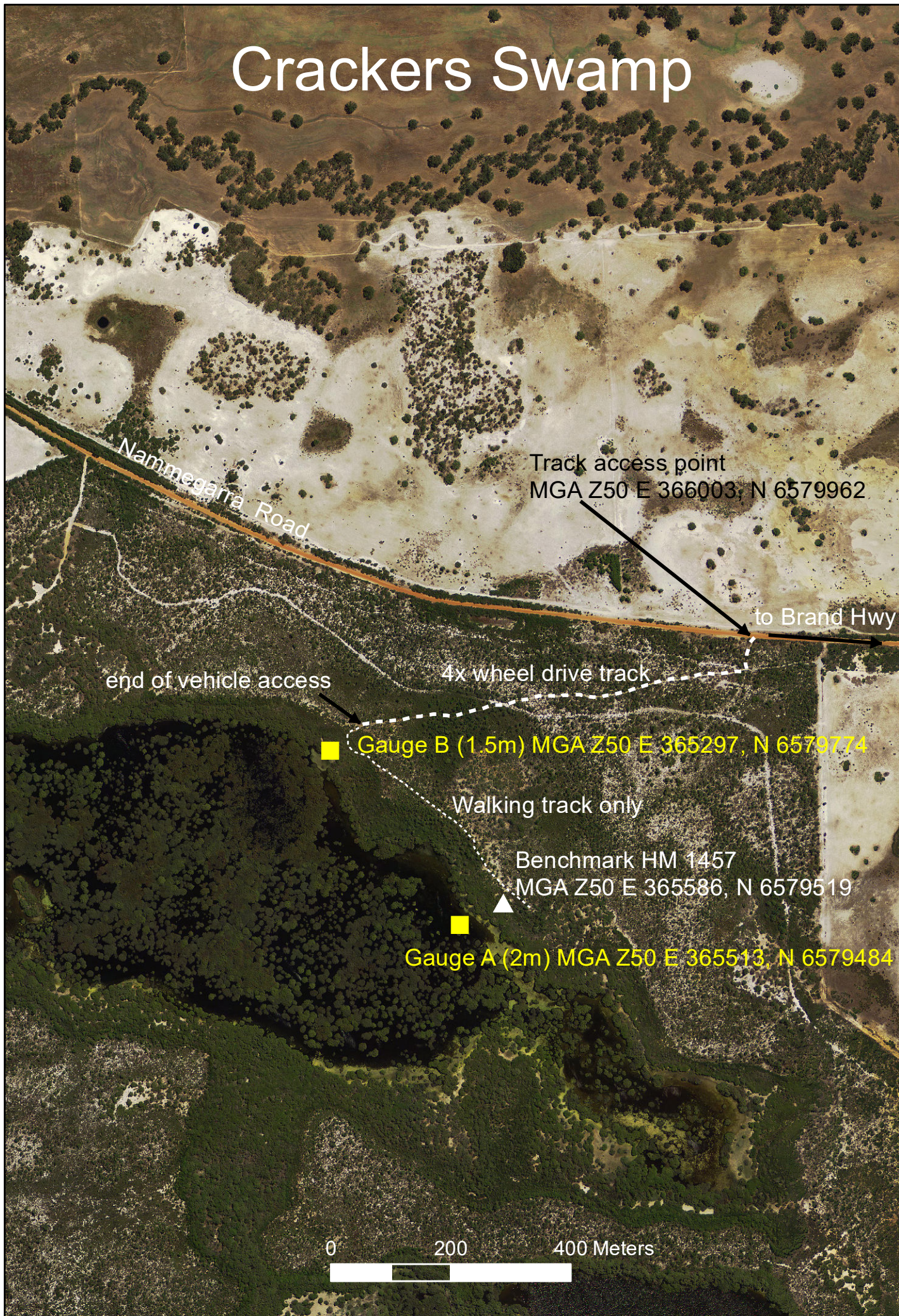
Gauge B (2m)
MGA Z50 E 577074
N 6268471

Gauge A (3m)
MGA Z50 E 577080
N 6268395

0 200 400 600 800 Meters



Crackers Swamp



Davies

Vehicle parking

Gauge A (5m)
MGA Z50 E 318892, N 6211605

Hamelin Bay Caravan Park

Benchmark HA 57
MGA Z50 E 318852, N 6211560

Hamelin Bay Road

Walk to lake via benchmark
access track then follow lake
perimeter. Lookout for snakes!

0 100 200 Meters



Dobaderry Lake

Gauge A (1m)
MGA Z50 E 462926, N 6437544

Gauge B (2m)
MGA Z50 E 462989, N 6437371

▲ Benchmark HR 738
MGA Z50 E 463077, N 6437224

Lake access track entry
MGA Z50 E 463243, N 6436924

Wandoo National Park track entry
MGA Z50 E 464126, N 6436895

Dobaderry Road

0 500 1,000 Meters



Dulbinning

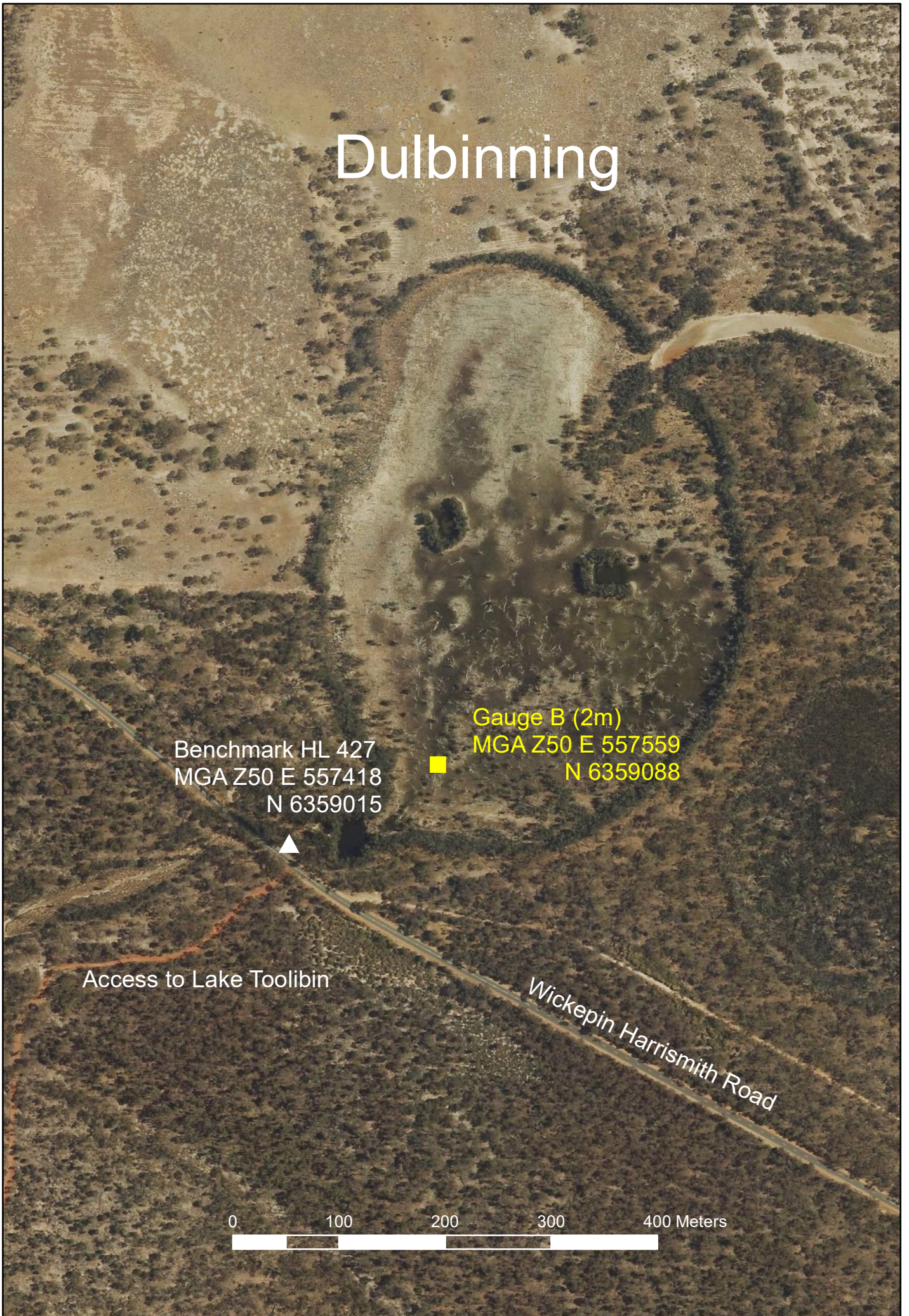
Benchmark HL 427
MGA Z50 E 557418
N 6359015

Gauge B (2m)
MGA Z50 E 557559
N 6359088

Access to Lake Toolibin

Wickepin Harrismith Road

0 100 200 300 400 Meters



Dumbleyung

Benchmark DUM 173
MGA Z50 E 560071
N 6309876

Gauge D (1m)
MGA Z50 E 560220 N 6309946

Gauge C (2m)
MGA Z50 E 560164 N 6309916

Gauge B (4m)
MGA Z50 E 560149 N 6309908

Gauge A (5m)
MGA Z50 E 560135 N 6309888

Bulloch Hills Road

Access road (Ski Club)

0 0.5 1 1.5 2 Kilometers



Eganu

■ Gauge B (1m) MGA Z50 E 391219, N 6680742

■ Gauge D (2m) MGA Z50 E 391370, N 6680573

■ ■ ▲ Benchmark HM 1454 MGA Z50 E 391567, N 6680556

Gauge E (3m)
(temp gauge)
MGA Z50 E 391382
N 6680561

■ Gauge C (3m) MGA Z50 E 391440, N 6680554

Soft sand 4x wheel vehicle track

★ Track entrance off main road
MGA Z50 E 392226, N 6679377

0 200 400 600 800 Meters



Egret

Australind

Laura st

Old Coast Road

Cristal Pigments Inorganic
Chemicals plant

MGA Z50 E 379666, N 6314855

Benchmark HC 294

Gauge A (1m)

MGA Z50 E 379644, N 6314833

Morangel Nature Reserve

0 100 200 Meters



Eneminga

Track entrance #2
MGA Z50 E 358339, N 6590214

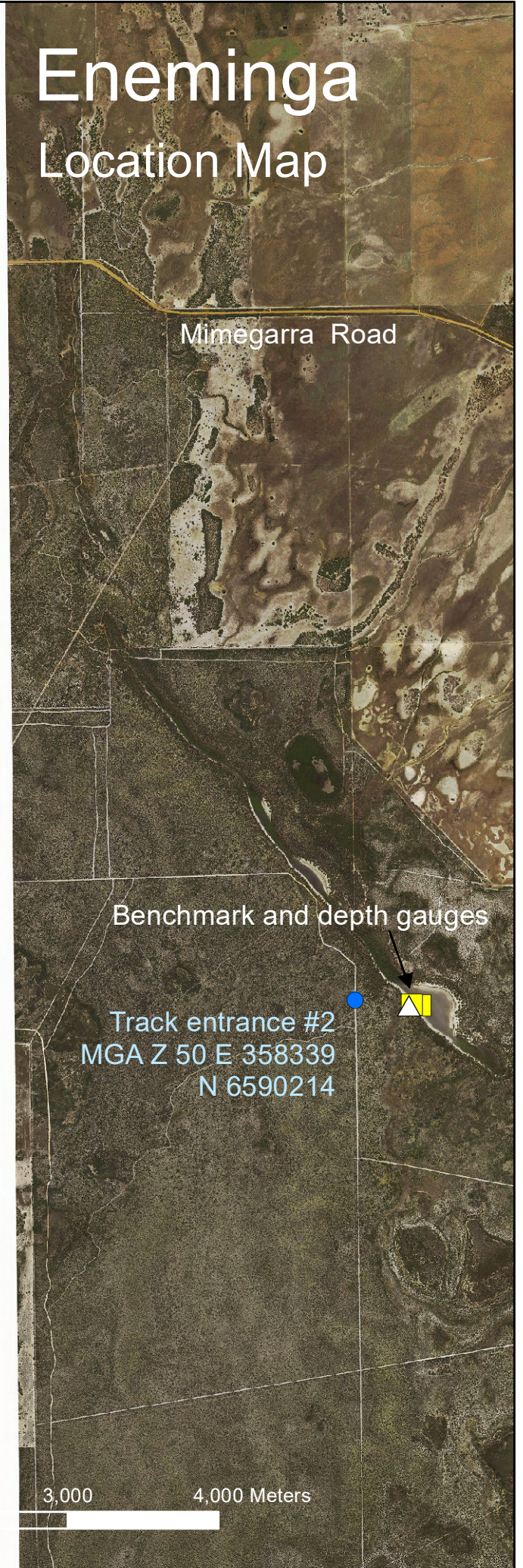
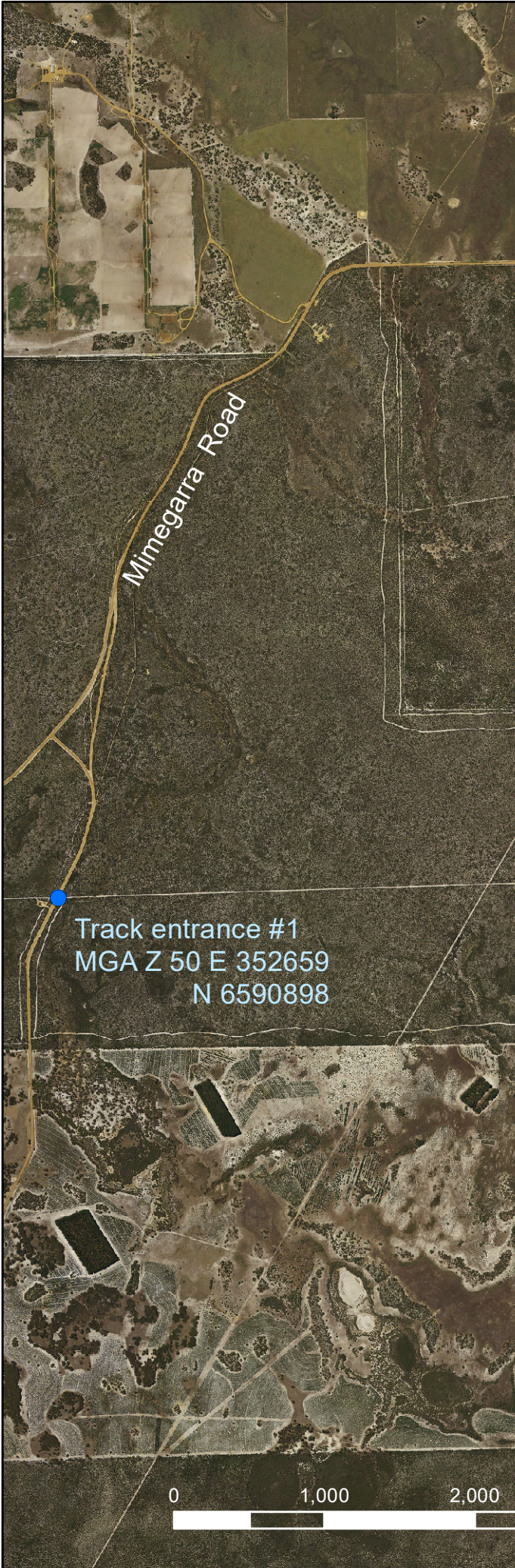
Benchmark HM 1460
MGA Z50 E 358697
N 6590178

Gauge D (3m)
MGA Z50 E 358706
N 6590183

Gauge A (2m)
MGA Z50 E 358714
N 6590186

Gauge C (1m)
MGA Z50 E 358772
N 6590182

0 200 400 600 800 Meters



Esperance 26410

Benchmark UR 272
MGA Z51 E 304849
N 6265010



Gauge A (1m)
MGA Z51 E 305015
N 6264993



Gauge B (2m)
MGA Z51 E 304893
N 6264886



Gauge C (3m)
MGA Z51 E 304841
N 6264791



Fuss Road

7.4km south to
Springdale Road

0 100 200 300 400 Meters



Flagstaff

Flagstaff Road

Gauge B (1m)

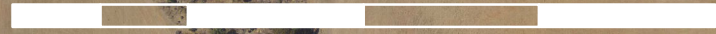
■ MGA Z50 E 523791
N 6291557

■ Gauge A (3m)

■ MGA Z50 E 523670
N 6291481

▲ Benchmark HD 221
MGA Z50 E 523642
N 6291467

0 200 400 600 800 Meters



Forrestdale

Note: To convert DoW guage readings to CALM lake depth deduct 21.63m

Armadale Road

Weld Street

Benchmark HZ 928
MGA Z50 E 400062, N 6442240

Gauge (23m AHD) Dept of Water
MGA Z50 E 399940, N 6441945

0 200 400 600 800 Meters

Gibbs

Armadale Road

Nicholson Road

Note: To convert DoW gauge readings to CALM lake depth deduct 23.84m

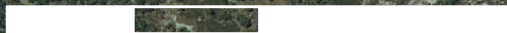
Dept of Water 25m gauge
MGA Z50 E 397659
N 6441771



Benchmark HR 699
MGA Z 50 E 397627
N 6441667

4x4 access track
(Track 1040m from Armadale Road)

0 200 400 Meters



Gingilup

Tipping Bucket Rain Gauge
MGA Z50 E 361552
N 6200389

Follow tapes through scrub

Temporary Benchmark
(stainless angle)
MGA Z50 E 361431
N 6200023

Gauge A (1m)
MGA Z50 E 361379
N 6199961

Gauge B (1m)
MGA Z50 E 361431
N 6199894



Gingilup Location

Tom Brittan Road

Fouracres Road

Locked gate at entry to Woodarburrup Bluegum Plantation

Track Point
MGA Z50 E 359575
N 6203944

Contact Bunbury Fibre Plantations
for permission to access property and
advise when entering and exiting property.

Steve Pickering
P: 9721 5963
M: 0427 989 951

E: spickering@bunburyfibre.com.au

Track Point
MGA Z50 E 358560
N 6202025

If track is wet, walk in
from this track point
MGA Z50 E 360352
N 6201084

Rain Gauge
MGA Z50 E 361552
N 6200389

See enlargement map
for walk in track details



Depth gauges and logging equipment



Goonaping

Benchmark HR 702
MGA Z50 E 461797 N 6443309



Gauge A (1m)
MGA Z50 E 462070 N 6442924

0 500 1,000 1,500 2,000 Meters



Dobaderry Road

Gore

McCalls Road

No vehicle access via track
Walk in only

Benchmark UE 358
MGA Z51 E 363166
N 6263536

Gauge A (3m)
MGA Z51 E 363172
N 6263512

Gauge C (2m)
MGA Z51 E 363173
N 6263523

0 100 200 300 400 Meters



Guraga

12.4kms to Ampol Cateby

Brand Highway

Cross into and out of private property at track points

Track point #2

MGA Z50 E 365718 N 6585664

Gauge A (3m)

MGA Z50 E 363461

N 6585386

Benchmark HM 1458

MGA Z50 E 363476 N 6585412

Heavy sand 4x4 access track

Track point #1

MGA Z50 E 367214 N 6585626



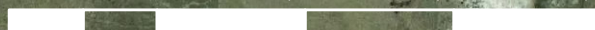
Gauge B (2m)

MGA Z50 E 363421 N 6585329

Gauge D (1m)

MGA Z50 E 363343 N 6585217

0 500 1,000 1,500 2,000 Meters



Harvey 12632

Gauge A (2m) MGA Z50 E 386566, N6348937

Benchmark HR 743 MGA Z50 E 386550, N 6348919

← to Old Coast Road - 5kms

Riverdale Road



Lake Hinds

0 500 1,000 Meters



Route Road

Benchmark HM 1456 MGA Z50 E 456859, N 6596884



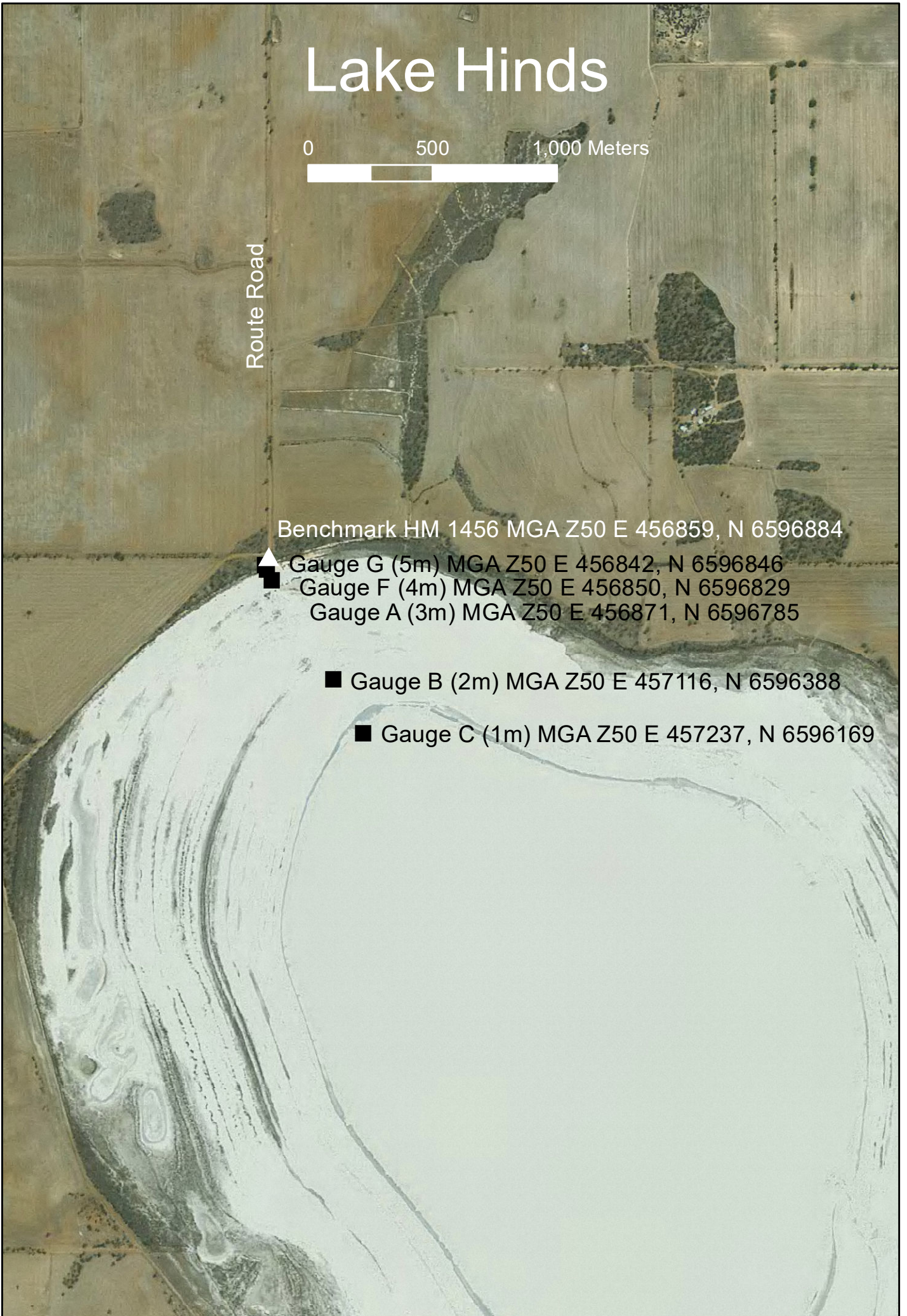
Gauge G (5m) MGA Z50 E 456842, N 6596846

Gauge F (4m) MGA Z50 E 456850, N 6596829

Gauge A (3m) MGA Z50 E 456871, N 6596785

■ Gauge B (2m) MGA Z50 E 457116, N 6596388

■ Gauge C (1m) MGA Z50 E 457237, N 6596169



Jandabup

Note: To convert DoW gauge readings to CALM lake depth deduct 43.76m

DoW Gauge 45.5m (2nd)

MGA Z 50 E 390803 ■
N 6487110

DoW Gauge 45.5m
MGA Z 50 E 390879 ■
N 6487034

DoW Gauge 46m ▲
MGA Z 50 E 390936 ■
N 6486978

Benchmark HZ 926
MGA Z50 E 390937 ■
N 6486982

Walk in access track

Car Park

Hawkins Road

0 100 200 Meters



Jasper

Gauge A (10m)
MGA Z50 E 379765
N 6190452

DoW Gauge 40m AHD
MGA Z50 E 379799
N 6190467

Landgate benchmark HP 254 destroyed

Lake access track junction
MGA Z50 E 379310, N 6189958

Lake Jasper Road

to Scott Road

0 200 400 Meters

Access to Scott Road
ONLY via Pneumonia Road
from Black Point Road

Jerdacuttup

Temporary benchmark (2018)
MGA Z51 E 245831 N 6241890

Temporary Depth Gauge (2017)
MGA Z51 E 245870 N 6241888

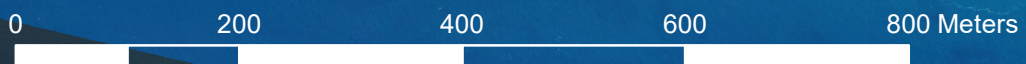
Gauge A (3m)
MGA Z51 E 246656
N 6241806

Gauge B (2m)
MGA Z51 E 246671
N 6241867

Southern Ocean Road

13km west to Hopetoun

Benchmark UR 273A
MGA Z51 E246655 N 6241791



Joondalup

Note: To convert DoW gauge readings to CALM lake depth deduct 14.25m (from May 1999 onwards).
Prior to May 1999 deduct 14.22m.

Boas Avenue

Benchmark HZ 925
MGA Z50 E 384352 N 6487435

DoW Gauge (18m AHD)
MGA Z50 E 384382 N 6487422

Neil Hawkins Park

0 50 100 150 200 Meters



Kent - East Lake Bryde

Lake Bryde Road

Benchmark HT295
MGA Z50 E 676818
N 6307259

▲ Gauge B (2m)
MGA Z50 E 676830
N 6307250

■ Gauge A (2m)
MGA Z50 E 677022
N 6307114

■ Gauge C (1m)
MGA Z50 E 677524
N 6307259



0

200

400 Meters



Text

Unicup Road

Kulunilup

Benchmark B704
MGA Z50 480256 N 6200214

DBCA TBM (stainless 40x40 angle)
MGA Z50 E 480427 N 6200001

Gauge A (1m)
MGA Z50 E 480460
N 6199995

Park here if wet
MGA Z50 E 480298
N 6199629

Kulunilup Turn Off
MGA Z50 E 479189
N 6199183

0 500 1,000 Meters



Kwornicup

Ball Road

Benchmark HO 281
MGA Z50 E 538575, N 6176168

Gauge A (2m)
MGA Z50 E 538749, N 6176181

Kwornicup Road

0 500 1,000 Meters



White (Narrogin) & Little White

Narrogin Dongolocking Road

Benner Road

White (Narrogin)

Gauge B (1m)
MGA Z50 E 542863
N 6347605

Gauge A (2m)
MGA Z50 E 542649
N 6347361

Benchmark HD 218
MGA Z50 E 542630
N 6347335

Access track Gate

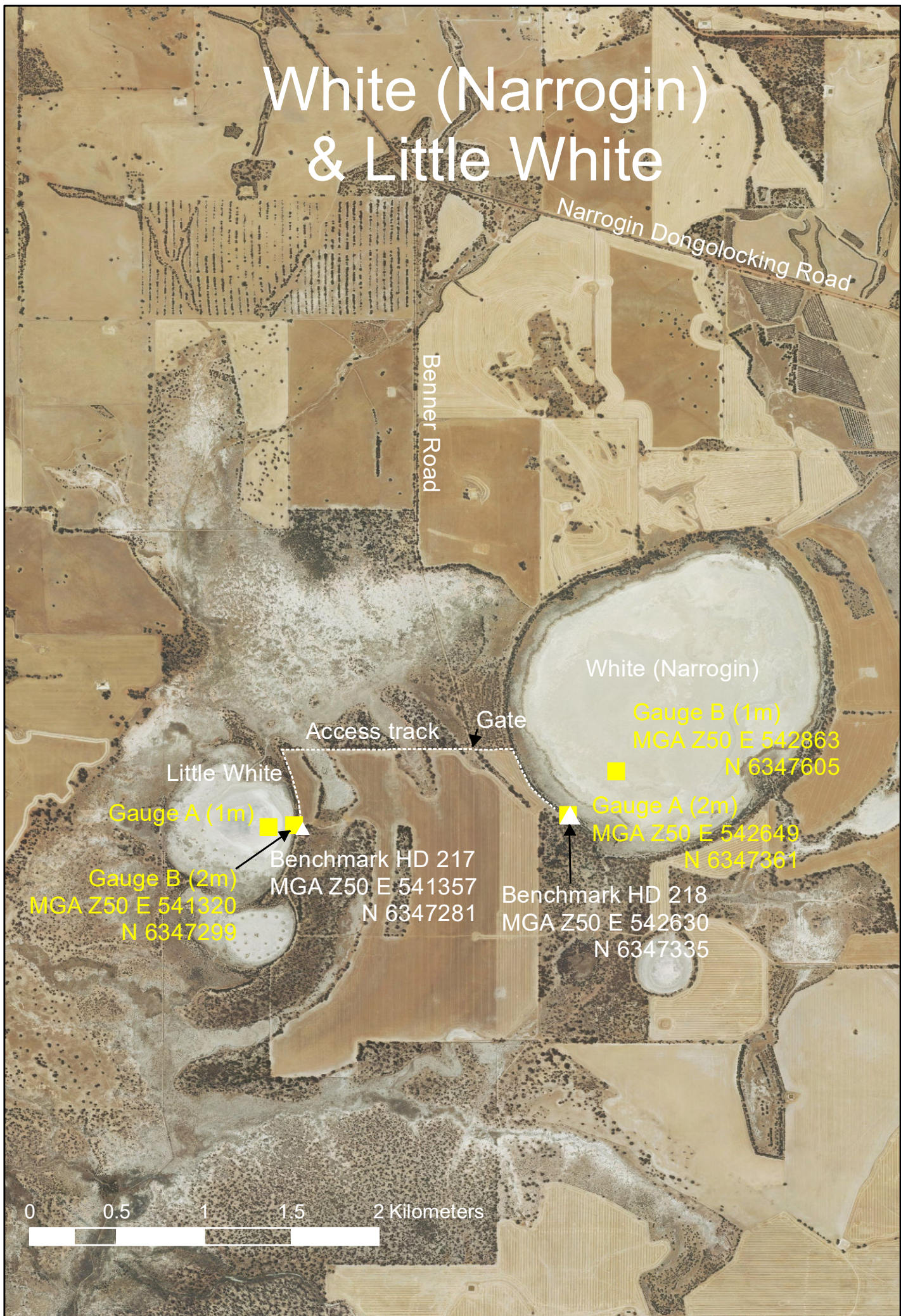
Little White

Gauge A (1m)

Gauge B (2m)
MGA Z50 E 541320
N 6347299

Benchmark HD 217
MGA Z50 E 541357
N 6347281

0 0.5 1 1.5 2 Kilometers



Logue

Gauge D (1m)
MGA Z50 E 320514 N 6696229



Benchmark HQ 48
MGA Z50 E 321114
N 6695888

Gauge B (1m) MGA Z50 E 320922 N 6695900



Gauge A (3m) MGA Z50 E 321069 N 6695885

Gauge C (4m) MGA Z50 E 321134 N 6695878

Walk along shore
north to depth gauges

Park vehicle here

New 4x4 vehicle
access track

Old soft sand 4x4 access track
To Brand Highway

Eneabba Leeman Road

0 500 1,000 Meters



Maringup

Gauge B (7m)
MGA Z50 E 426470
N 6 144711

*Wade along shoreline
to access Gauge B

Gauge A (7m)
MGA Z50 E 426593, N 6 144731

*Hidden in tall Baumea

Benchmark HP 253
MGA Z50 E 426553, N 6 144690

Access via Moores Track (4WD) off
Chesapeake Road. Turn onto
Management Access track north
of Moores Hut and through locked gate,
need 'YG' key (Pemberton DBCA office)

0 200 400 Meters

Martinup

Douglas Road

Maders Road

Benchmark HD 222
MGA Z50 E 516363
N 6289934

Gauge A (2m)
MGA Z50 E 516331
N 6289919

Gauge B (1m)
MGA Z50 E 516293
N 6289864



Lake McLarty

Gauge B (1m)
MGA Z50 E 379436
N 6379802

Gauge A (2m) MGA Z50 E 379500
N 6379615

BM HR 744 ▲
MGA Z50 E 379490
N 6379598

Access track entrance
MGA Z50 E 379521
N 6379477

Mills Road

0 100 200 Meters



Lake Mears

Lake Mears Road

Ill defined 4x4
vehicle track

Benchmark HL 420 MGA Z50 E 533098, N 6433941

Gauge C (4m) MGA Z50 E 533124, N 6433941

▲ Gauge A (3m) MGA Z50 E 533134, N 6433930

Gauge B (2m) ■ Gauge D (1m) MGA Z50 E 533202, N 6433856
MGA Z50 E 533149
N 6433914

0 200 400 600 800 Meters



Mettler

Mettler Road

Mettler Access Track
MGA Z50 E 645658
N 6173565

Caution: potential soft sand

Benchmark HE 113
Gauge D (2m)
MGA Z50 E 646369
N 6172015

Gauge E (1m)
MGA Z50 E 646560
N 6172071

Gauge C (1m)
MGA Z50 E 646484
N 6172021

Lake access track
MGA Z50 E 646185
N 6172020

Gauge G (3m)
MGA Z50 E 646348
N 6171915

Gauge F (1m)
MGA Z50 E 646530
N 6171989

0 400 800 Meters

Moates

Two Peoples Bay Road

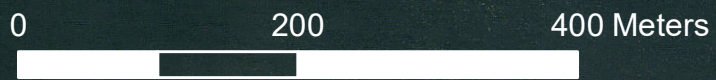
Moyle Road

Park here

Walk in only.
Maintain good
dieback hygiene

Benchmark HO 282
MGA Z50 E 600908
N 6 131536

Gauge B (5m)
MGA Z50 E 600898
N 6131477



Telegraph Road

Mortijinup

Locked Gate
MGA Z51 E 375250
N 6261734

Contact Mick to collect gate key
8 Elysium Road, Esperance
P: 9071 5913

Gate

Park vehicle, climb fence
MGA Z51 E 373970
N 6259730

Walk

Benchmark
MGA Z51 E 373696 N 6259461

Gauge A (4m)
MGA Z51 E 373701 N 6259450
Gauge B (3m)
MGA Z51 E 373702 N 6259435

Gauge C (2m)
MGA Z51 E 373705 N 6259386

Gauge D (1m)
MGA Z51 E 373706 N 6259334



Mount Le Grand

Gauge A (2m)
MGA Z51 E 419064
N 6240199



▲ Benchmark UE 363
MGA Z51 E 4190666
N 6240163

0 100 200 300 400 Meters



Mowen

From Mowen Road turn south into Great North Road
(MGA Z50 E 343938, N 6243548).

After 4.4km turn east into Oasis Road
(MGA Z50 E 343927, N 6239095).

Continue for 1.8km, park on old track into wetland.
(Caution: Oasis Road boggy when wet)



Muir

Contact property owners Alida & Jason Parke
before entering on (08) 9857 1024.
From Muirs Highway turn south into Nabagup Road
follow until reach property gates.

Locked gates into property.
Park down reserve firebreak
and walk in.

Access by foot from here

Lake Road

Gauge D (1m)
MGA Z50 E 470944
N 6185033

Benchmark HP 255
MGA Z50 E 471032, N 6 185028

0 200 400 Meters



Ngopitchup

Access from Warrenup Road
turn west onto Grahams Well Road.
Access via old road reserve (rough).

Grahams Well Road

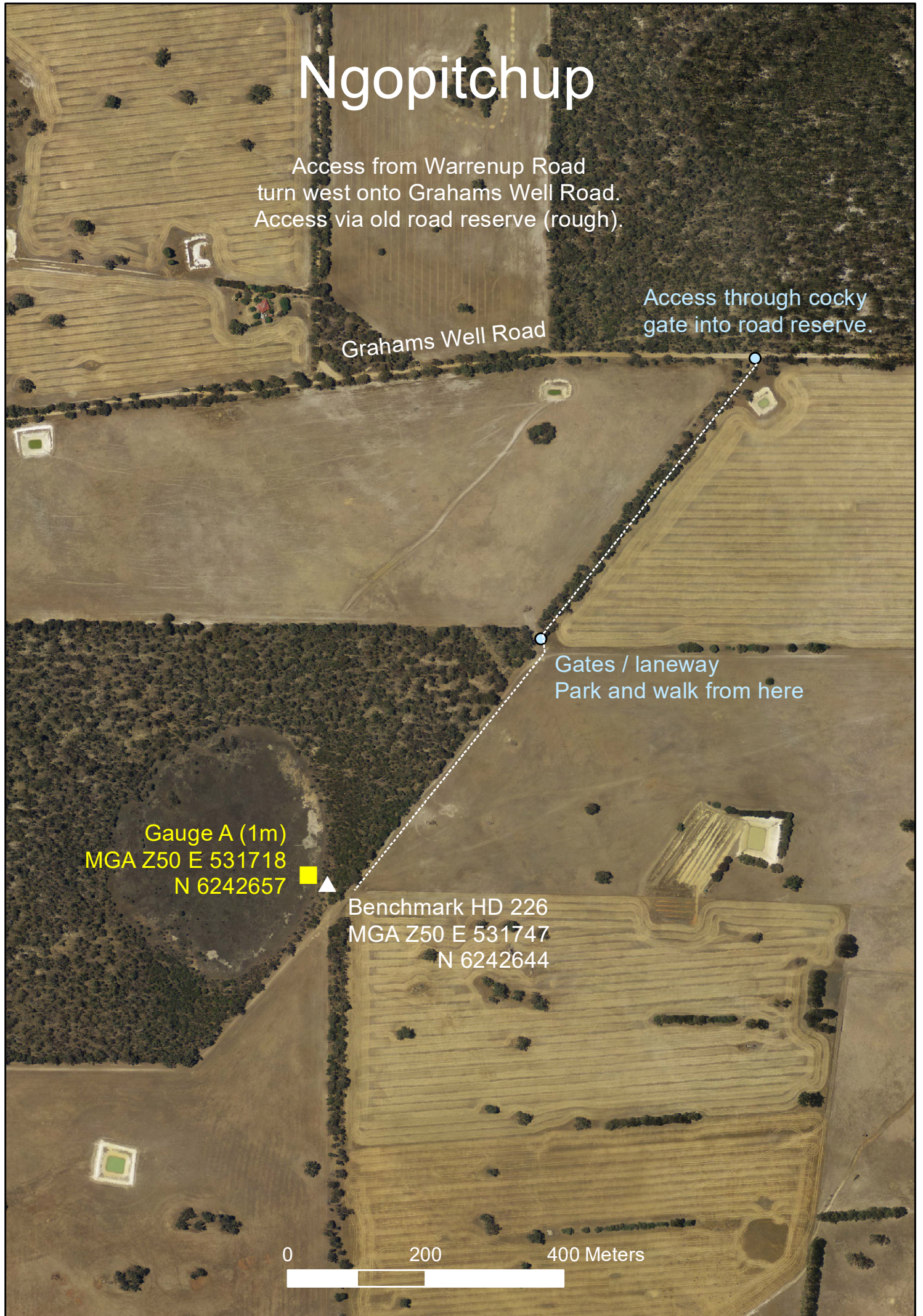
Access through cocky
gate into road reserve.

Gates / laneway
Park and walk from here

Gauge A (1m)
MGA Z50 E 531718
N 6242657

Benchmark HD 226
MGA Z50 E 531747
N 6242644

0 200 400 Meters



Nine Mile

MGA Z50 E 385836
N 6376745
Gauge D (1m)

MGA Z50 E 385718 N 6376632
Gauge B (2m)

Walking path

TBM lake depth height (LH) = 0.743m
MGA Z50 E 385897 N 6376713

Park vehicle here on top of ridge.
Do not drive down around lake edge.

BM HR 742
MGA Z50 E 385536
N 6376507

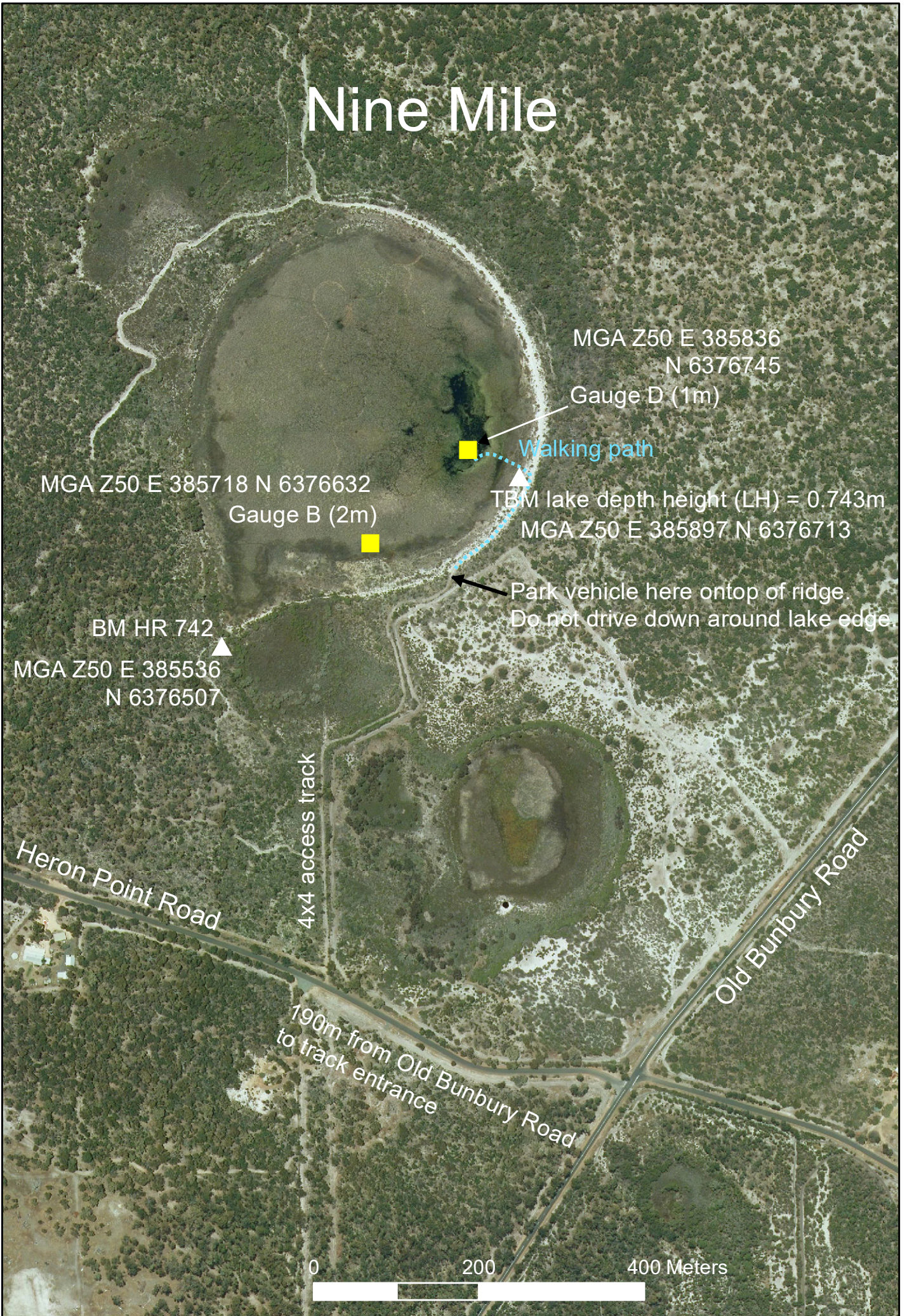
4x4 access track

Heron Point Road

Old Bunbury Road

190m from Old Bunbury Road
to track entrance

0 200 400 Meters



Noobijup

Noobijup Road

Unicup Road

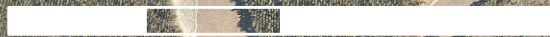
Access via private property driveway

Gauge A (2m)
MGA Z50 E 480847
N 6192660

Gauge B (1m)
MGA Z50 E 480825
N6192669

Benchmark HP257
MGA Z50 E 480867
N 6192653

0 400 800 Meters



Noonying

Great Eastern Highway

Tamin - approx 2.5kms

Access track through private property

Benchmark HU 408 MGA Z50 542507, N 6497744

■ Gauge B (2m) MGA E 542496, N 6497696

■ Gauge A (2m) MGA E 542497, N 6497652

0 200 400 Meters



North Parriup

Bedford
Harbour
Road

Springdale Road

Benchmark UR 274
MGA Z51 E 281562
N 6250268

Gauge B (2m)
MGA Z51 E 281574
N 6250256

0 200 400 600 800 Meters



Owingup

Summer only access by vehicle.
If wet park down track opposite
campground entrance and walk.

South Coast Highway

Gauge B (1m)
MGA Z50 E 506997
N 6126847

Gauge C (2m)
MGA Z50 E 507250
N 6126753

Benchmark HO 287
MGA Z50 E 507258
N 6126756

Gauge D (2m)
MGA Z50 E 507176
N 6126768

Boat Harbour Road

Park here if water
over track.



Pabelup South

Take GPS to find gauge,
easy to get lost.

Benchmark HE 114
MGA Z50 E 725800
N 6222286

Gauge B (1m)
MGA Z50 E 725614
N 6222214

0 500 1,000 Meters

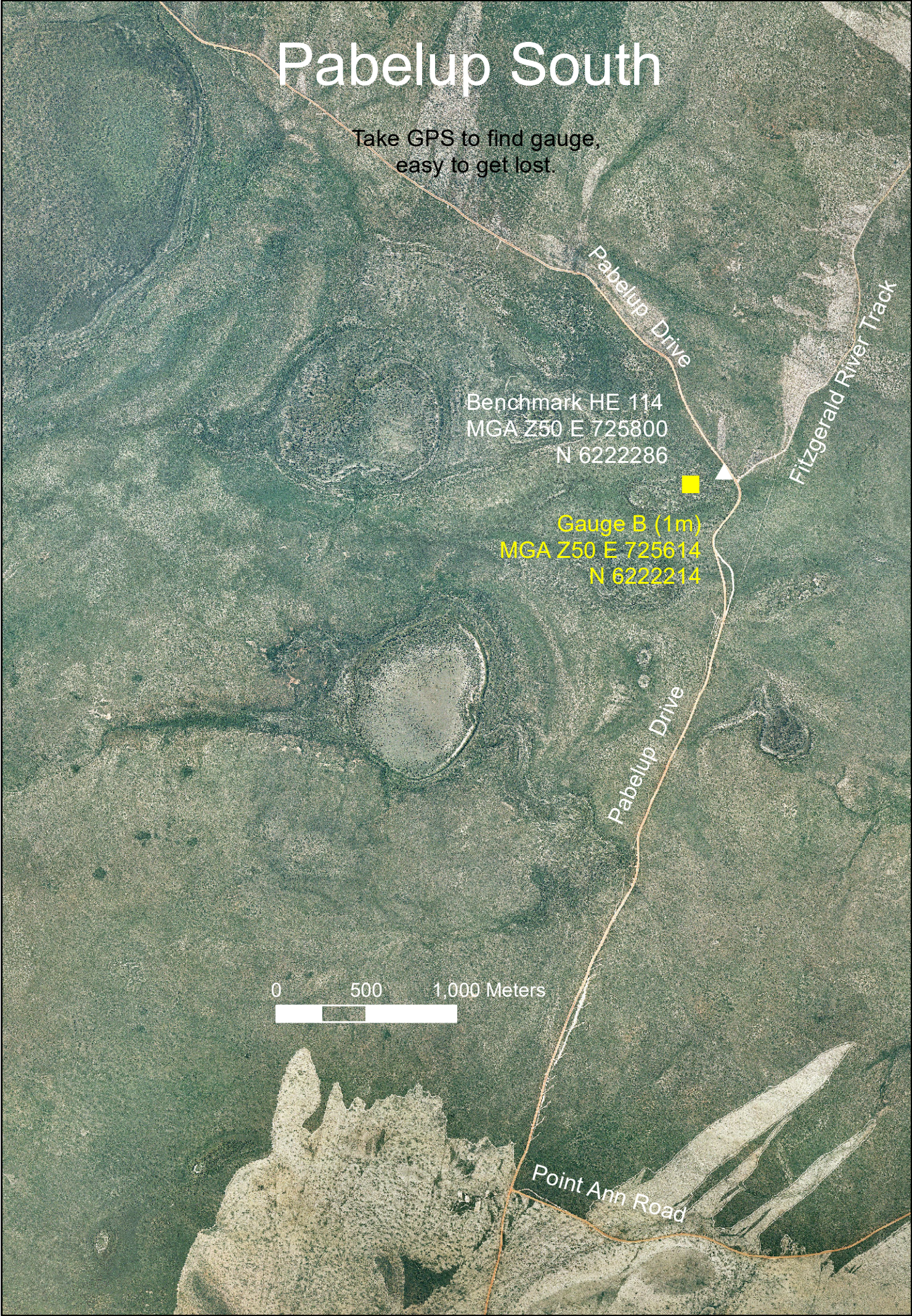


Pabelup Drive

Fitzgerald River Track

Pabelup Drive

Point Ann Road



Parkeyerring

Great Southern Highway

Access track
(900m south of bridge)

Gauge A (1m)
MGA Z50 E 533022
N 6307271



Benchmark HD 212
MGA Z50 E 533156
N 6307263



Gauge C (2m)
MGA Z50 E 533112
N 6307262



Pillenorup

Contact rangers at Stirling Range National Park before entry.
Ensure to comply with dieback hygiene protocols
and washdown vehicle at Moingup Spring if necessary.

Chester Pass Road

Walk down overgrown track to
west of car park. Use GPS
to navigate off track to gauges.

- Gauge E (2m)
MGA Z50 E 601374
N 6187734
- Benchmark HO 290
MGA Z50 E 601412
N 6187773
- Gauge A (1m)
MGA Z50 E 601158
N 6187551
- Gauge B (1m)
MGA Z50 E 601110
N 6187534
- Gauge C (2m)
MGA Z50 601515
N 6187601
- Gauge D (3m)
MGA Z50 E 602018
N 6187453
- Park at corner
MGA Z50 E 602962
N 6187174

Walk track

Yungemere Track 4WD

Dieback gate

Branson Road

0 1,000 2,000 Meters



Pleasant View

Gauge B (1m)
MGA Z50 E 608240
N 6145375

Gauge A (3m)
MGA Z50 E 608346
N 6145327

Gauge C (2m)
MGA Z50 E 608316
N 6145338

Benchmark HO 280
MGA Z50 E 608357
N 6145314

Access track

South Coast Highway

Town of Manypeaks

0 200 400 Meters



Tordit-Gurrup

Poorginup

Track to
Tordit-Gurrup

From Muirs Highway turn south
into Neeranup Road then turn
west onto Myalgelup Road.

Track to
Byenup

Gauge A (1m)
MGA Z50 E 476422
N 6177137

Benchmark B 684
MGA Z50 E 476447
N 6177128

Track point (Water sign)
MGA Z50 E 476484
N 6177087

Myalgelup Road

0 200 400 600 800 Meters

Powell

Elleker

Benchmark SF 12A
MGA Z50 E 567497, N 6125091

Gauge A (2m)
MGA Z50 E 567449
N 6125035

Lower Denmark Road

Grasmere Road

0 400 800 Meters



Range Road Yate

Gauge B (1m)
MGA Z50 E 665999 ■
N 6275256

Gauge A (2m)
MGA Z50 E 666067 ■
N 6275212

▲ Benchmark HT294
MGA Z50 E 666083
N 6275186

Track 1.07km west
of Needilup Road

Range Road

0 50 100 150 200 Meters



Red Lake (Bruce Rock)

Old Beverley Road

Benchmark HL 431
MGA Z50 E 602548, N 6437065

Gauge A (1m) MGA Z50 E 602641, N 6436999

0 400 800 Meters



Ronnerup

Gauge B (2m)
MGA Z50 E 744115
N 6317814

Gauge C (1m)
MGA Z50 E 744079
N 6317821

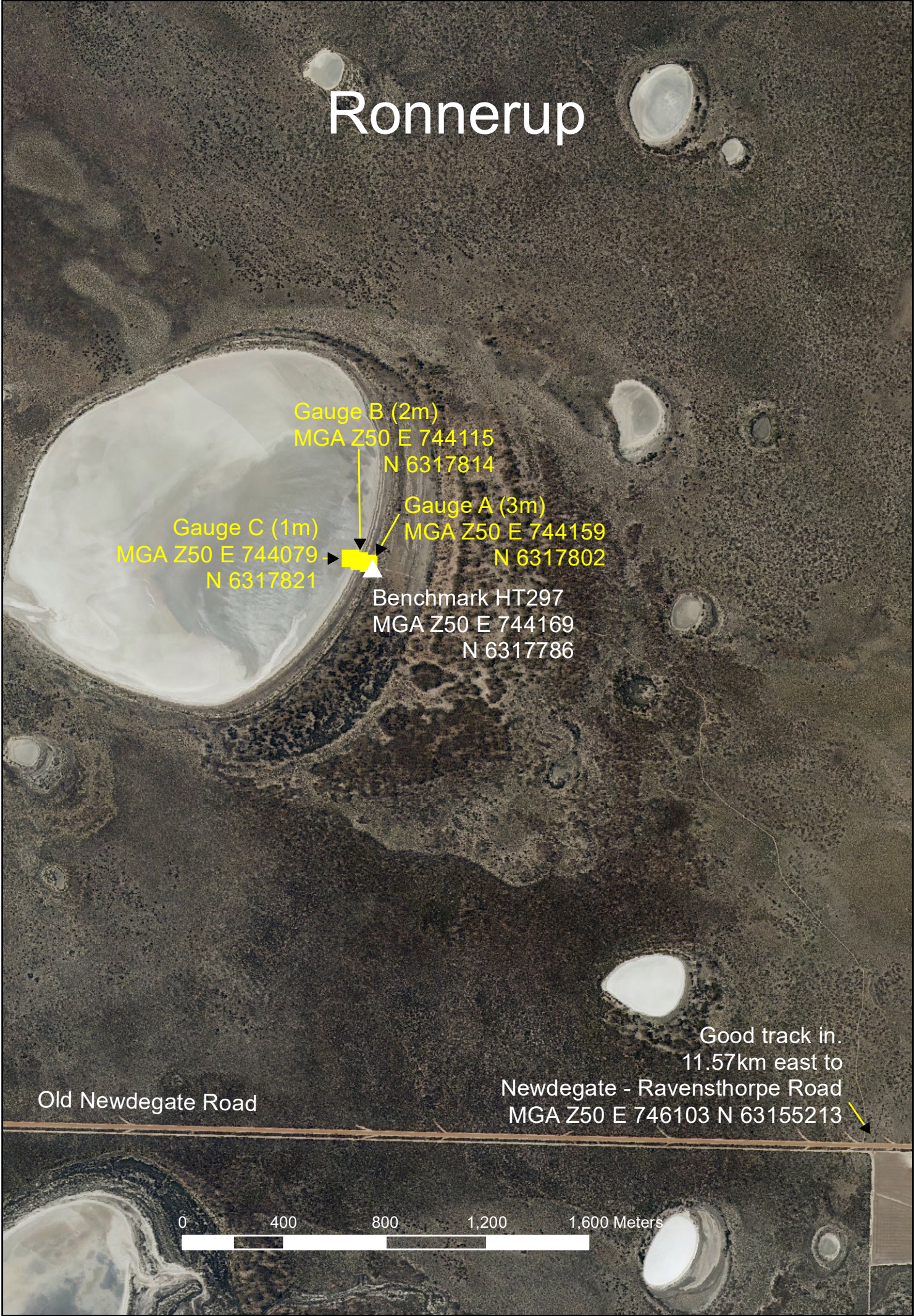
Gauge A (3m)
MGA Z50 E 744159
N 6317802

Benchmark HT297
MGA Z50 E 744169
N 6317786

Old Newdegate Road

Good track in.
11.57km east to
Newdegate - Ravensthorpe Road
MGA Z50 E 746103 N 63155213

0 400 800 1,200 1,600 Meters



Shark

Coolgardie Esperance Highway

Myrup Road

Bush track

Benchmark UE 356

▲MGA Z51 E 394568

N 626073

Gauge B (3m) ■
MGA Z51 E 394551
N 6263068

0 50 100 150 200 Meters



Station

Fisheries Road

Park on verge

Merivale Road

Walk in on track

Benchmark UE 355
MGA Z51 E 402615
N 6259237

Gauge A (2m)
MGA Z51 E 402585
N 6259184

0 100 200 300 400 Meters



Taarblin (South)

Gauge B (1m)
■ MGA Z50 E 551386
N 6350724

Gauge A (2m)
■ MGA Z50 E 551273
N 6350528

Benchmark HL 416
▲ MGA Z50 E 551258
N 6350395

Lakes Road

0 100 200 300 400 Meters



Taarblin North (TAAN)

Yilliminning Road

Access track

Gauge C (2m)
MGA Z50 E 552201
N 6355611

▲ DBCA Benchmark
MGA Z50 E 552241
N 6355660

TBM Angle
MGA Z50 E 552386 ▲
N 6355457

Gauge B (1m)
MGA Z50 E 552087 ■
N 6355387

Gauge A (1m)
MGA Z50 E 552448 ■
N 6354789



0 100 200 Meters



Thomsons

Gauge C (1m)
MGA Z50 E 389510
N 6441710

Gauge F (1m)
MGA Z50 E 389509
N 6441530

Gauge A (2m) MGA Z50 E 389518
N 6441514

Benchmark HZ 929
MGA Z50 E 389519
N 6441483

Public access gate to
walk path into the reserve

Car Park

Please notify DBCA Regional Parks
of intention to access the reserve

0 100 200 Meters

Russel Road

Toolibin

Gauge B (1m)
MGA Z50 E 557375
N 6357233

Gauge C (2m)
MGA Z50 E 557570
N 6357265

Gauge D (3m)
MGA Z50 E 557635
N 6357254

Benchmark HL 417
MGA Z50 E 557650
N 6357248



Byneup Lagoon

Tordit-Gurrup

Gauge D (2m)

MGA Z50 E 476001
N 6179421

Gauge E (1m)

MGA Z50 E 475818
N 6179437

Gauge C (3m)

MGA Z50 E 476088
N 6179414

Gauge A (4m)

MGA Z50 E 476115
N 6179411

Benchmark B 683

MGA Z50 E 476135
N 6179406

Track to Byneup Lagoon

Tordit-Gurrup turn off
(Sign M62)

MGA Z50 E 476859
N 6178570

Poorginup

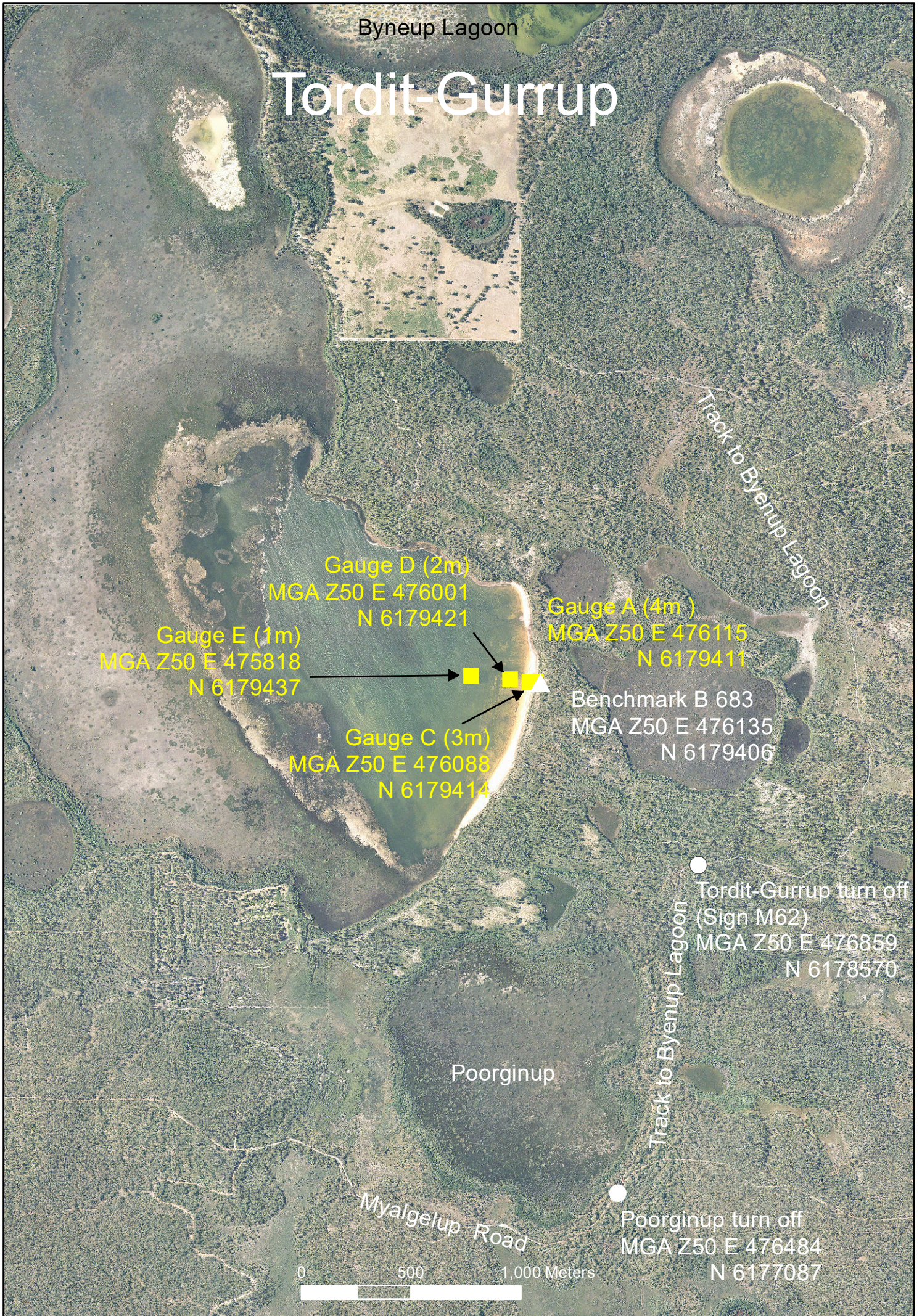
Track to Byneup Lagoon

Poorginup turn off

MGA Z50 E 476484
N 6177087

Myalgelup Road

0 500 1,000 Meters



Towerrinning

Boat Ramp

Depth gauge on north side of northern jetty
in two parts 3.4 - 4.0m above deck and
3m gauge below deck.
(Gap between 3.0 and 3.4m)

Gauge B (4m) MGA Z50 E 480676, N 6283961



Benchmark HC 290 MGA Z50 E 480708, N 6283950

Car Park

Darkan Road South

0 100 200 Meters



Unicup

Lake Unicup Road

Benchmark B 695
MGA Z50 E 474399
N 6 620082



Gauge C (3m)
MGA Z50 E 474416
N 6199995



Gauge A (2m)
MGA Z50 E 474491
N 6199937

0

500

1,000 Meters



Varley

Hyden Lake King Road

Gauge B (2m)
MGA Z50 E 722096
N 6380319

Gauge A (2m)
MGA Z50 E 722232
N 6380162

Benchmark HH 282
MGA Z50 E 722520
N 6379843

Park and walk

Kulin Holt Rock Road

0 500 1,000 1,500 2,000 Meters



Walbyring

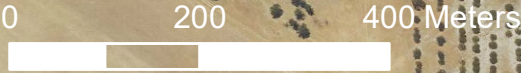
Gauge B (1m)
MGA Z50 E 555496 ■
N 6355455

Gauge A (2m)
MGA Z50 E 555522 ■
N 6355329

Yilliminning Road

▲ Benchmark UD 7
MGA Z50 E 555534
N 6355214

Kellihher Road



Walyormouring

Botherling Road

East Road

Camp ground and day use parking

Walk track

Benchmark HZ 902 MGA Z50 E 488021, N 6554454

Gauge D (2m)

MGA Z50 E 487969

N 6554381

Gauge C (1m)

MGA Z50 E 487855

N 6554214

Oak Park Road

Spark Road

0 500 1,000 Meters



Wannamal

Gauge A (2m)
MGA Z50 E 409620
N 6556675



Gauge B (1m)
MGA Z50 E 409545
N 6 556656



Benchmark HZ 914
MGA Z50 E 409642
N 6 556691

Bindoon Moora Road

Jackson Road

0 200 400 Meters



Warden

Coolgardie Esperance Highway

Gauge F (1m)
MGA Z51 E 396620
N 6257576

Gauge E (2m)
MGA Z51 E 396840
N 6257522

Gauge D (3m)
MGA Z51 E 396932
N 6257469

Benchmark UE 357
MGA Z51 E 396947
N 6257428

5km south to
Esperance

0 200 400 600 800 Meters



Warrinup

■ Gauge A (2m) MGA Z50 E 523594 N 6199610

■ Gauge B (1m) MGA Z50 E 523540 N 6199535

▲ Benchmark HO 284 MGA Z50 E 523495 N 6199485

Rest Stop
Car Park

Frankland Cranbrook Road

Stockyard Road

0 100 200 300 400 Meters



West Arthur 5456 (Dead Man's Swamp NR)


Morrell Road

Narrow bridge


Doyle Road

Ways Road


Walk from here

Gauge A (2m) 
MGA Z51 E 496496
N 6293035

Benchmark HC 291
MGA Z50 E 496510
N 6293047

Gauge B (1m) 

0 200 400 600 800 Meters



Wheatfield

Gauge A (3m)
MGA Z51 E 401063
N 6258816



Gauge B (2m)
MGA Z51 E 401051
N 6258814

Benchmark UE 362
MGA Z51 E 401069
N 6258818

Access road to
Wheatfield carpark
and boat ramp
(~4km from Esperance)

Fisheries Road



White (Narrogin) & Little White

Narrogin Dongolocking Road

Benner Road

White (Narrogin)

Gauge B (1m)
MGA Z50 E 542863
N 6347605

Gauge A (2m)
MGA Z50 E 542649
N 6347361

Benchmark HD 218
MGA Z50 E 542630
N 6347335

Access track Gate

Little White

Gauge A (1m)

Gauge B (2m)
MGA Z50 E 541320
N 6347299

Benchmark HD 217
MGA Z50 E 541357
N 6347281

0 0.5 1 1.5 2 Kilometers



BROW_WHIW

White Water

Benchmark HL 423 MGA Z50 E 558770, N 6399914

Gauge B (1m) MGA Z50 E 559113, N 6399864

Gauge A (2m) MGA Z50 E 558827, N 6399907

Shirley Road

to Wickipin Corrigin Road

Brown

Gauge B (1m)

MGA Z50 E 559783, N 6397862

Gauge A (2m)

MGA Z50 E 559665, N 6397777

Benchmark HL 424

MGA Z50 E 559606, N 6397735

0 400 800 Meters



Wilson

Lake Wilson

Gauge A (4m)
MGA Z50 E 382364
N 6189496



Benchmark TCM 840293/V51
MGA Z50 E 382325 N 6189429



Lake Smith

Scott Road
4WD vehicle access only

Access to Scott Road via Pneumonia Road only

0 200 400 Meters



Yaalup

Gauge C (1m)
MGA Z50 E 647384 ■
N 6263944

Gauge A (2m)
MGA Z50 E 647381 ■
N 6263848

Gauge D (3m)
MGA Z50 E 647393 ■
N 6263804

Benchmark HT292
▲ MGA Z50 E 647443
N 6263830

Access via old road off Cowcher Road,
head west along track into wetland.
Distance approx 3.6km from Cowcher Road.

0 50 100 Meters



Yarnup

Yarnup Road

Benchmark B 702
MGA Z50 E 487368
N 6196543



Gauge B (2m)
MGA Z50 E 487420
N 6196528

Gauge A (2m)
MGA Z50 E 487400
N 6196528

0 100 200 Meters



Yarra Yarra

Three Springs

West Yarra Road

Midlands Road

0 500 1,000 1,500 2,000 Meters

Benchmark HX 614 MGA Z50 E 379957 N 6726980

Gauge A (2m) MGA Z50 E 380028 N 6726973

Gauge B (1m) MGA Z50 E 380303 N 6726907



Yeagarup & Yeagarup South



Ritter Road

Temporary Benchmark (TBM)
MGA Z50 E 396813 N 6177185

Gauge A (top=10.64m)
Attached under jetty on LHS
MGA Z50 E 396813
N 6177154

Yeagarup Lake
(YEAG)

★ Park on verge here
MGA Z50 E 395722
N 6176654
Walk to dunes and
Yeagarup South

Yeagarup
South (YEAS)

Gauge A (4m)
MGA Z50 E 396321
N 6176122

Approx walking path

★
YEAS access path
MGA Z50 E 396339
N 6176082

Yeagarup & Yeagarup South




Ritter Road

Temporary Benchmark (TBM)
MGA Z50 E 396813 N 6177185 

Gauge A (top=10.64m)
Attached under jetty on LHS
MGA Z50 E 396813
N 6177154


Yeagarup Lake
(YEAG)

 Park on verge here
MGA Z50 E 395722
N 6176654
Walk to dunes and
Yeagarup South

Yeagarup
South (YEAS)

Gauge A (4m)
MGA Z50 E 396321
N 6176122

Approx walking path

 YEAS access path
MGA Z50 E 396339
N 6176082

Yealering

Wickepin Corrigin Road

Walk through bush on vague track to benchmark and depth gauges

Park vehicle in caravan park here

Benchmark HL 421 MGA Z50 E 558587, N 6393389

Gauge E (3m) MGA Z50 E 558591, N 6393378

Gauge C (2m)
MGA Z50 E 558588, N 6393365

Gauge D (1m)
MGA Z50 E 558558, N 6393144

0 200 400 Meters



Yellilup

Ask farmers permission to access
via private property:
Mr Peacock's driveway is west
3.1km on Swamp Road

Gauge B (1m) MGA Z50 E 686719 N6201363

Gauge F (2m) MGA Z50 E 686771 N 6201353

Gauge E (3m) MGA Z50 E 686826 N 6201343

Gauge D (4m)
MGA Z50 E 686865
N 6201340

Benchmark HE112
MGA Z50 E 686899
N 6201353

Gauge C (5m)
MGA Z50 E 686885
N 6201345

Drive around fenceline
to access gauges
Gate (cocky)

Swamp Road (gravel)

Sign 'Coromandel Poll
Merino Stud'

0 200 400 Meters



Yurine

Brand Highway

Gauge B (2m) MGA Z50 E 385187 N 6543604

Benchmark HZ 916
MGA Z50 E 385169
N 6543598

Gauge A (1m) MGA Z50 E 385250 N 6543601

Beermullah Road West

0 200 400 600 800 Meters

